



Price

£380,000

Leasehold

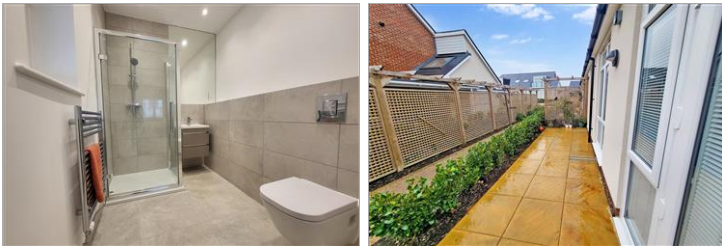
2x  2x  1x 

**Hurricane Way,
Terlingham Gardens,
Hawkinge, Kent, CT18**



Video Tour available

Wards
Helping you move forwards



Main features

- High specification Pentland Homes build
- Private gated over 55's development
- Social open plan living area
- Vacant property with no onward chain
- Carport with off road parking for two cars

Accommodation

GROUND FLOOR

Hallway

Bedroom 1: 12'6 x 9'6 (3.81m x 2.90m)

Ensuite Shower: 7'9 x 6'5 (2.36m x 1.96m)

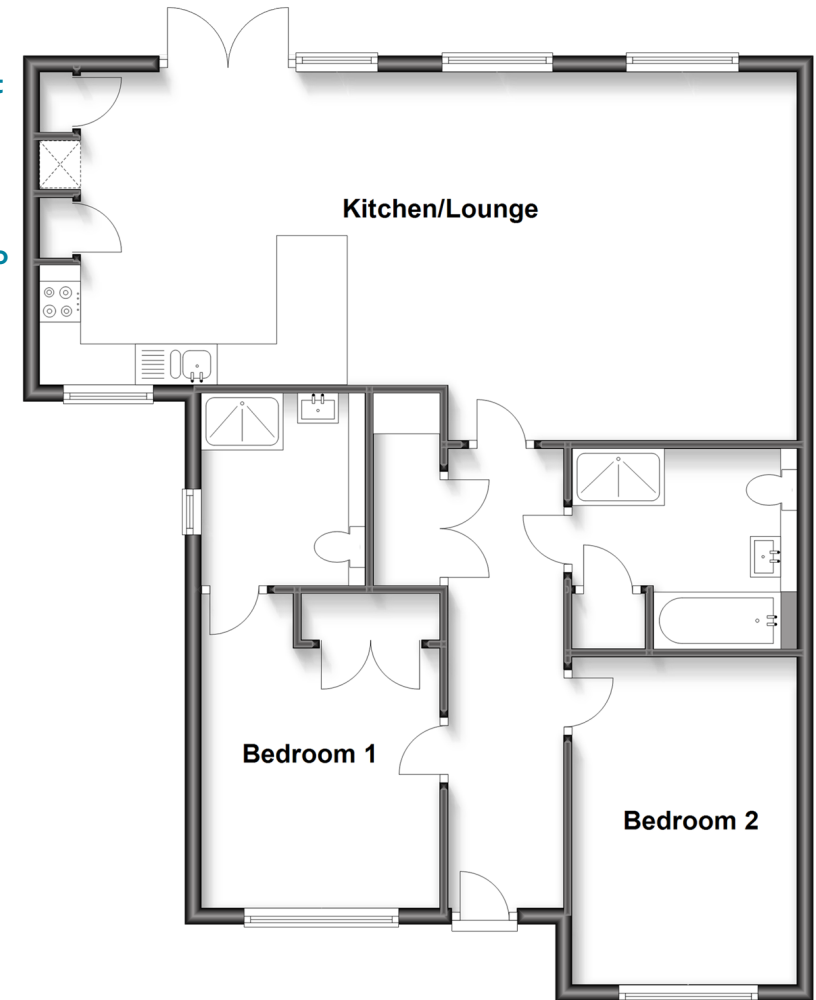
Bedroom 2: 13'1 x 8'9 (3.99m x 2.67m)

Lounge/Kitchen/Diner: 30'3 x 14'7 (9.23m x 4.45m)

Bath/Shower Room: 8'8 x 7'8 (2.64m x 2.34m)

Ground Floor

Approx. 84.9 sq. metres (913.5 sq. feet)



Call Folkestone - 01303 256505 ■ wardsfolkent.co.uk

- Legal advice should be taken to verify fixtures/fittings, planning, alterations and/or lease details
- Appliances & services are untested, dimensions are approximate and floor plans are not to scale



12637326/20221122/LO/DW