



OVER 60?

Secure this property
for up to **59% less!**

Price

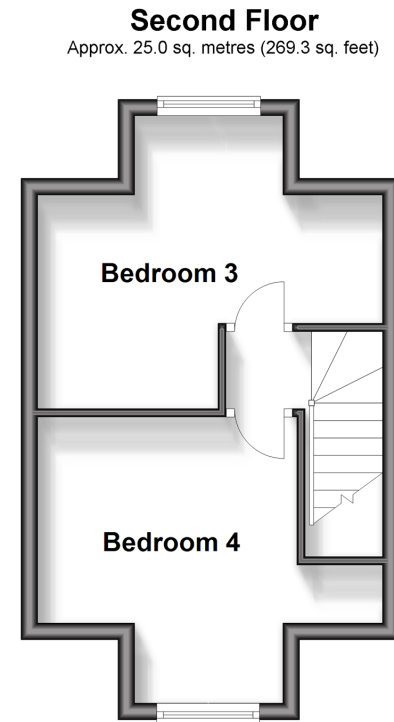
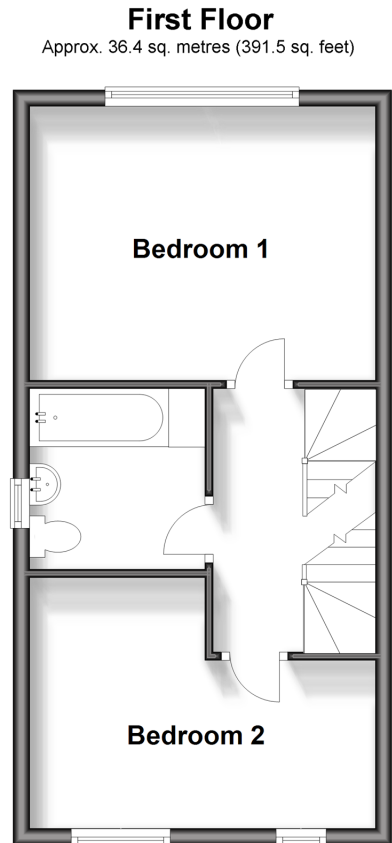
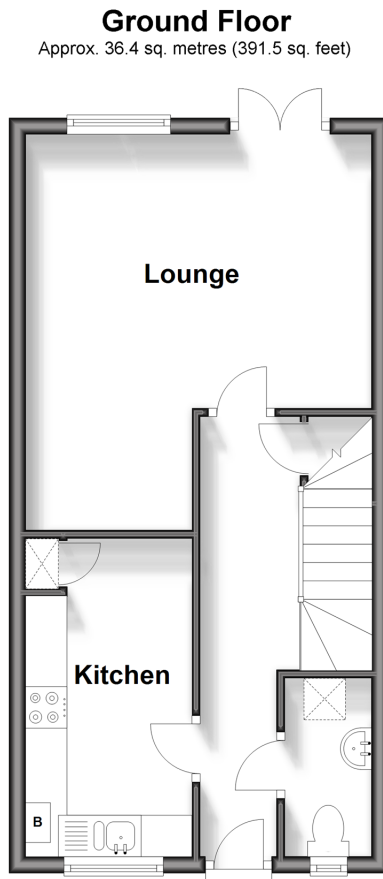
£350,000

Freehold

4x  1x  1x 

**Ashley Avenue,
Folkestone, Kent, CT19**

Wards
Helping you move forwards



Accommodation

GROUND FLOOR

Hallway
Lounge: 13'9 x 10'9 (4.19m x 3.28m)
Kitchen: 12'7 x 6'7 (3.84m x 2.01m)
Separate Toilet

FIRST FLOOR

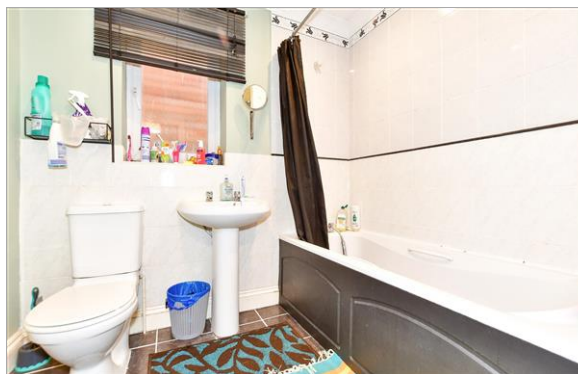
Landing
Bedroom 1: 13'9 x 10'7 (4.19m x 3.23m)
Bedroom 2: 13'9 x 6'7 (4.19m x 2.01m)
Bathroom: 7'4 x 6'8 (2.24m x 2.03m)

SECOND FLOOR

Landing
Bedroom 3: 9'1 x 8'1 (2.77m x 2.47m)
Bedroom 4: 10'1 x 8'0 (3.08m x 2.44m)

OUTSIDE

Front Garden
Rear Garden
Off Road Parking



Main features

- Off road parking
- Substantial sized home
- Open plan living space
- Sought after location close to local amenities, transport links and schools
- Downstairs toilet



Nearest Schools

Primary Schools: All Souls' C of E Primary 0.3 miles, Harcourt Primary 0.5 miles, Morehall Primary 0.6 miles

Secondary Schools: The Harvey Grammar School 0.8 miles, The Folkestone School for Girls 1.7 miles, Highview



Transport Information

Train Stations: Folkestone West High Speed Link 1.0 miles, Folkestone Central 1.5 miles, Sandling 4.9 miles



Address

Ashley Avenue, Folkestone, Kent, CT19



Directions

For directions to this property please contact us.



Call Folkestone Branch 01303 256505 ■ wardsofkent.co.uk



- Legal advice should be taken to verify fixtures/fittings, planning, alterations and/or lease details
- Appliances & services are untested, dimensions are approximate and floor plans are not to scale
- Through a Homewise Home For Life Plan people aged 60+ can secure this property for up to 59% less, by purchasing a Lifetime Lease.



12637353/20240313/CW/CW