



OVER 60?

Secure this property
for up to **59% less!**



Video Tour available

Price

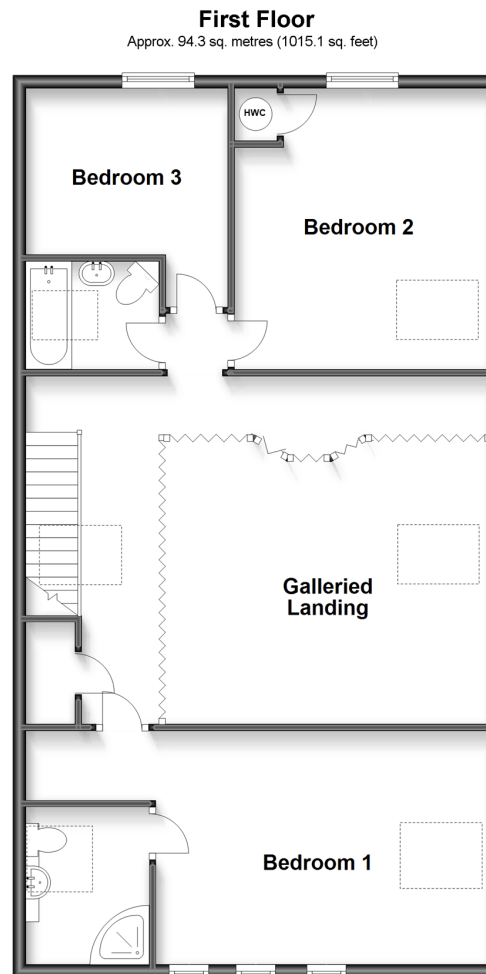
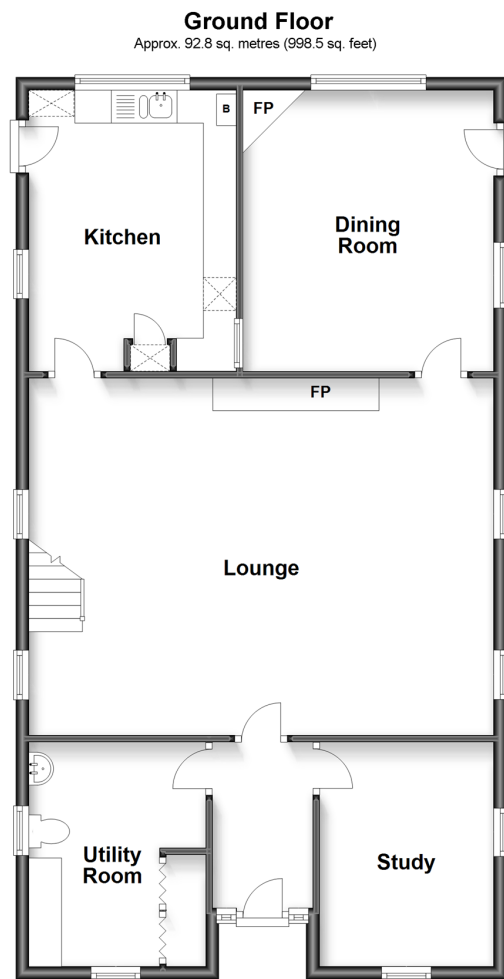
£600,000

Freehold

3x  2x  2x 

**Slip Lane, Alkham,
Dover, Kent, CT15**

Wards
Helping you move forwards



Accommodation

GROUND FLOOR

Entrance Porch
Entrance Hallway
Utility Room
Study: 12'0 x 9'0 (3.66m x 2.75m)
Lounge : 22'7 x 17'9 (6.89m x 5.41m)
Dining Room : 14'2 x 12'5 (4.32m x 3.79m)
Kitchen : 14'2 x 10'2 (4.32m x 3.10m)

FIRST FLOOR

Galleried Landing
Family Bathroom
Bedroom 1 : 22'7 x 11'10 (6.89m x 3.61m)
En-Suite Shower Room
Bedroom 2 : 14'3 x 12'6 (4.35m x 3.81m)
Bedroom 3 : 10'1 x 9'11 (3.08m x 3.02m)

OUTSIDE

Rear Garden
Off Road Parking
Workshop/Out buildings



Main features

- Majestic, converted Chapel built circa 1880
- Nestled within the picturesque village of Alkham
- Oozing period features & versatile accommodation
- Easy maintenance rear garden & a 3 car drive
- Perfectly located with direct access to Dover, Folkestone & Motorway links



Nearest Schools

Primary Schools: Lydden Primary 2.0 miles, Capel-le-Ferne Primary 2.1 miles, Temple Ewell C of E Primary 2.1 miles
Secondary Schools: The Old School 1.8 miles, Harbour School 2.4 miles, Astor College for the Arts 2.9 miles



Transport Information

Train Stations: Kearsney 2.2 miles, Shepherdswell 3.5 miles, Dover Priory 3.6 miles



Address

Slip Lane, Alkham, Dover, Kent, CT15



Directions

For directions to this property please contact us.



Wards
Helping you move forwards

Call Dover Branch 01304 214876 ■ wardsofkent.co.uk



- Legal advice should be taken to verify fixtures/fittings, planning, alterations and/or lease details
- Through a Homewise Home For Life Plan people aged 60+ can secure this property for up to 59% less, by purchasing a Lifetime Lease.
- Appliances & services are untested, dimensions are approximate and floor plans are not to scale



12637366/20230124/TE/GM