



**OVER 60?**

Secure this property  
for up to **59% less!**



Video Tour available

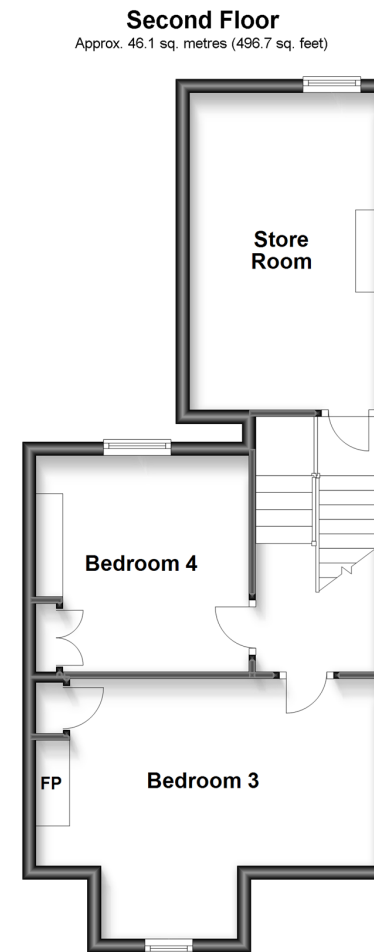
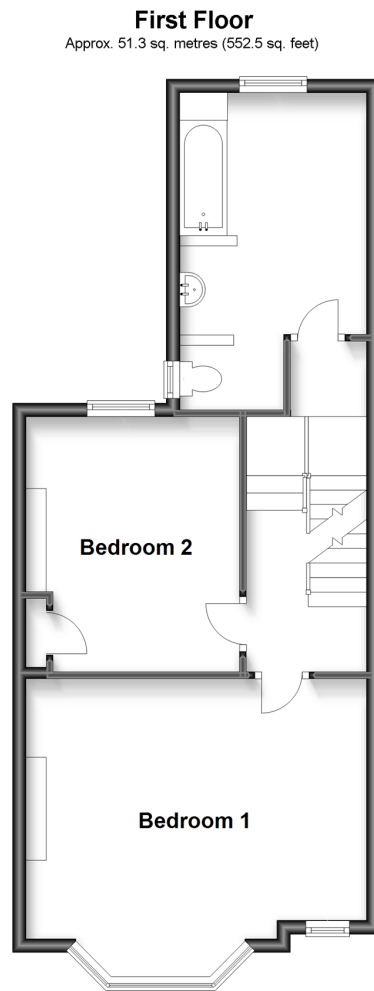
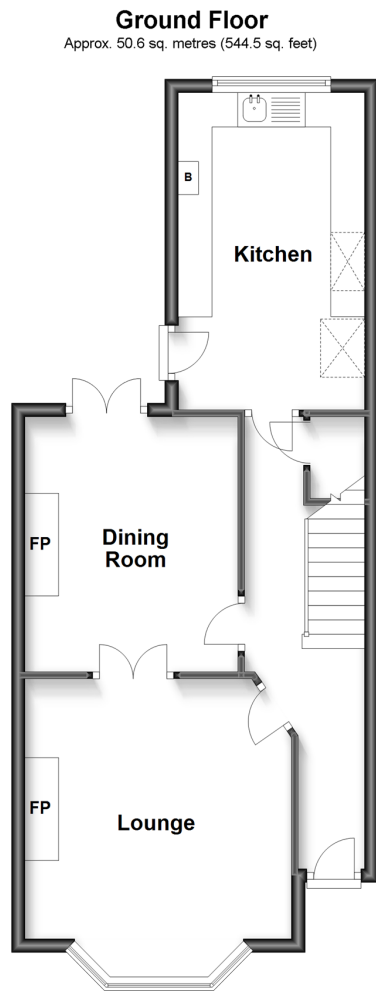
**Price**  
**£325,000**

**Freehold**

4x  1x  2x 

**Bradstone Avenue,  
Folkestone, Kent, CT19**

*Wards*  
Helping you move forwards



## Accommodation

### GROUND FLOOR

Hallway  
Lounge: 14'8 x 13'0 (4.47m x 3.97m)  
Dining Room: 12'4 x 10'0 (3.76m x 3.05m)  
Kitchen: 15'0 x 9'2 (4.58m x 2.80m)

### FIRST FLOOR

Landing  
Bedroom 1: 12'9 x 10'6 (3.89m x 3.20m)  
Bedroom 2: 16'11 x 14'9 (5.16m x 4.50m)  
Bathroom: 15'7 x 9'0 (4.75m x 2.75m)

### SECOND FLOOR

Bedroom 3: 10'5 x 10'0 (3.18m x 3.05m)  
Bedroom 4: 16'0 x 15'0 (4.88m x 4.58m)  
Store Room

### OUTSIDE

Rear Garden





## Main features

- Perfect family home with room to grow
- Walking distance to town with Tesco Express round the corner Three Story accommodation, easily adaptable to suite your own needs
- Further potential for conversion subject to building regs
- Close to main bus route and Folkestone Central station



### Nearest Schools

Primary Schools: Park Farm Primary 0.4 miles, Stella Maris Catholic Primary 0.4 miles, Folkestone, St Peter's C of E Primary 0.4 miles

Secondary Schools: Highview School 0.5 miles, Oakwood



### Transport Information

Train Stations: Folkestone Central 0.7 miles, Folkestone West High Speed Link 1.5 miles, Dover Priory 6.1 miles



### Address

Bradstone Avenue, Folkestone, Kent, CT19



### Directions

For directions to this property please contact us.





*Wards*  
Helping you move forwards

Call Folkestone Branch 01303 256505 ■ [wardsofkent.co.uk](http://wardsofkent.co.uk)



■ Legal advice should be taken to verify fixtures/fittings, planning, alterations and/or lease details ■ Appliances & services are untested, dimensions are approximate and floor plans are not to scale  
■ Through a Homewise Home For Life Plan people aged 60+ can secure this property for up to 59% less, by purchasing a Lifetime Lease.



12637385/20230215/DW/AP1