



**Price**  
**£350,000**

**Freehold**

4x  1x  1x 

**Papworth Close,  
Folkestone, Kent, CT19**

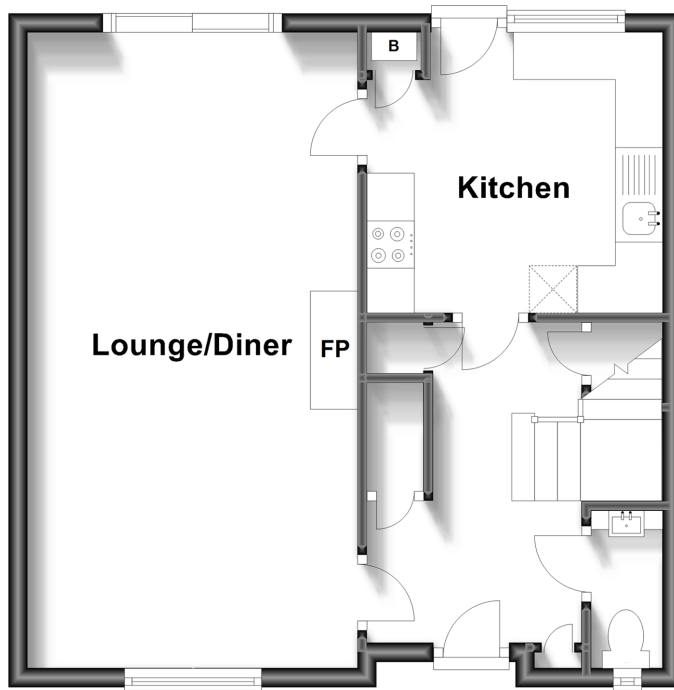
**OVER 60?**

Secure this property  
for up to **59% less!**

*Wards*  
Helping you move forwards

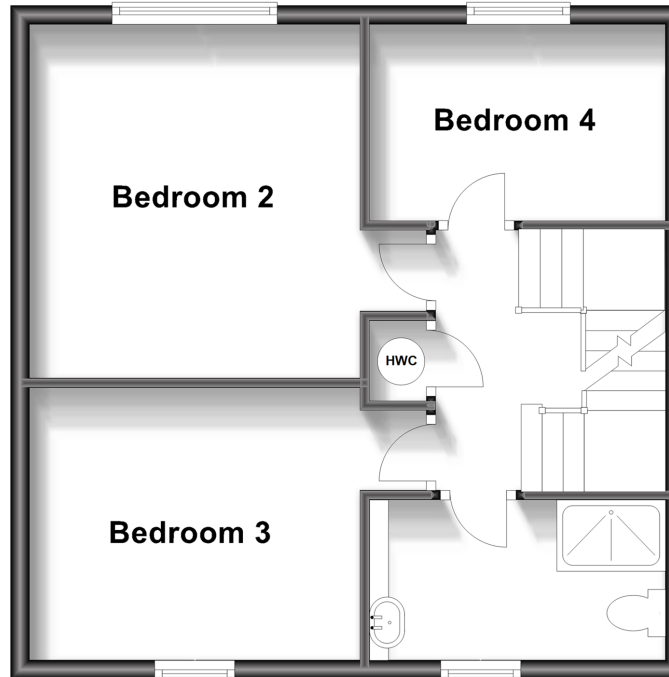
## Ground Floor

Approx. 44.8 sq. metres (482.1 sq. feet)



## First Floor

Approx. 45.3 sq. metres (487.5 sq. feet)



## Second Floor

Approx. 24.0 sq. metres (257.8 sq. feet)



## Accommodation

### GROUND FLOOR

Hallway  
Lounge/Diner: 22'1 x 11'6 (6.74m x 3.51m)  
Kitchen: 10'2 x 9'9 (3.10m x 2.97m)  
Separate Toilet

### FIRST FLOOR

Landing  
Bedroom 2: 13'9 x 12'3 (4.19m x 3.74m)  
Bedroom 3: 13'9 x 9'6 (4.19m x 2.90m)  
Bedroom 4: 10'3 x 6'7 (3.13m x 2.01m)  
Bathroom

### SECOND FLOOR

Bedroom 1: 20'4 x 11'8 (6.20m x 3.56m)

### OUTSIDE

Garage  
Front Garden  
Rear Garden





## Main features

- Highly sought after location
- Spacious accommodation set over three floors
- Low maintenance rear garden
- Garage and off road parking
- Great access to A20/M20



### Nearest Schools

Primary Schools: Morehall Primary 0.4 miles, Stella Maris Catholic Primary 0.6 miles, Park Farm Primary 0.7 miles

Secondary Schools: The Harvey Grammar School 0.4 miles, South Kent College 0.7 miles



### Transport Information

Train Stations: Folkestone West High Speed Link 0.6 miles, Folkestone Central 0.8 miles, Sandling 4.0 miles



### Address

Papworth Close, Folkestone, Kent, CT19



### Directions

For directions to this property please contact us.





*Wards*  
Helping you move forwards

Call Folkestone Branch 01303 256505 ■ [wardsofkent.co.uk](https://wardsofkent.co.uk)



■ Legal advice should be taken to verify fixtures/fittings, planning, alterations and/or lease details ■ Appliances & services are untested, dimensions are approximate and floor plans are not to scale  
■ Through a Homewise Home For Life Plan people aged 60+ can secure this property for up to 59% less, by purchasing a Lifetime Lease.



12637432/20230706/CW/CW