

OVER 60?

Secure this property
for up to **59% less!**

Price
£180,000

Leasehold

2x  1x  1x 

**Clifton Gardens,
Folkestone, Kent, CT20**

Wards
Helping you move forwards

Main features

- Light and airy top floor apartment with open plan living
- Sea views as well as vast amounts of visible sky from windows
- Stones throw from the stunning Leas walks and town centre
- Highly desirable area set in the West End of Folkestone
- Lift access

Accommodation

FOURTH FLOOR

Hallway

Lounge/Kitchen: 21'5 x 14'2 (6.53m x 4.32m)

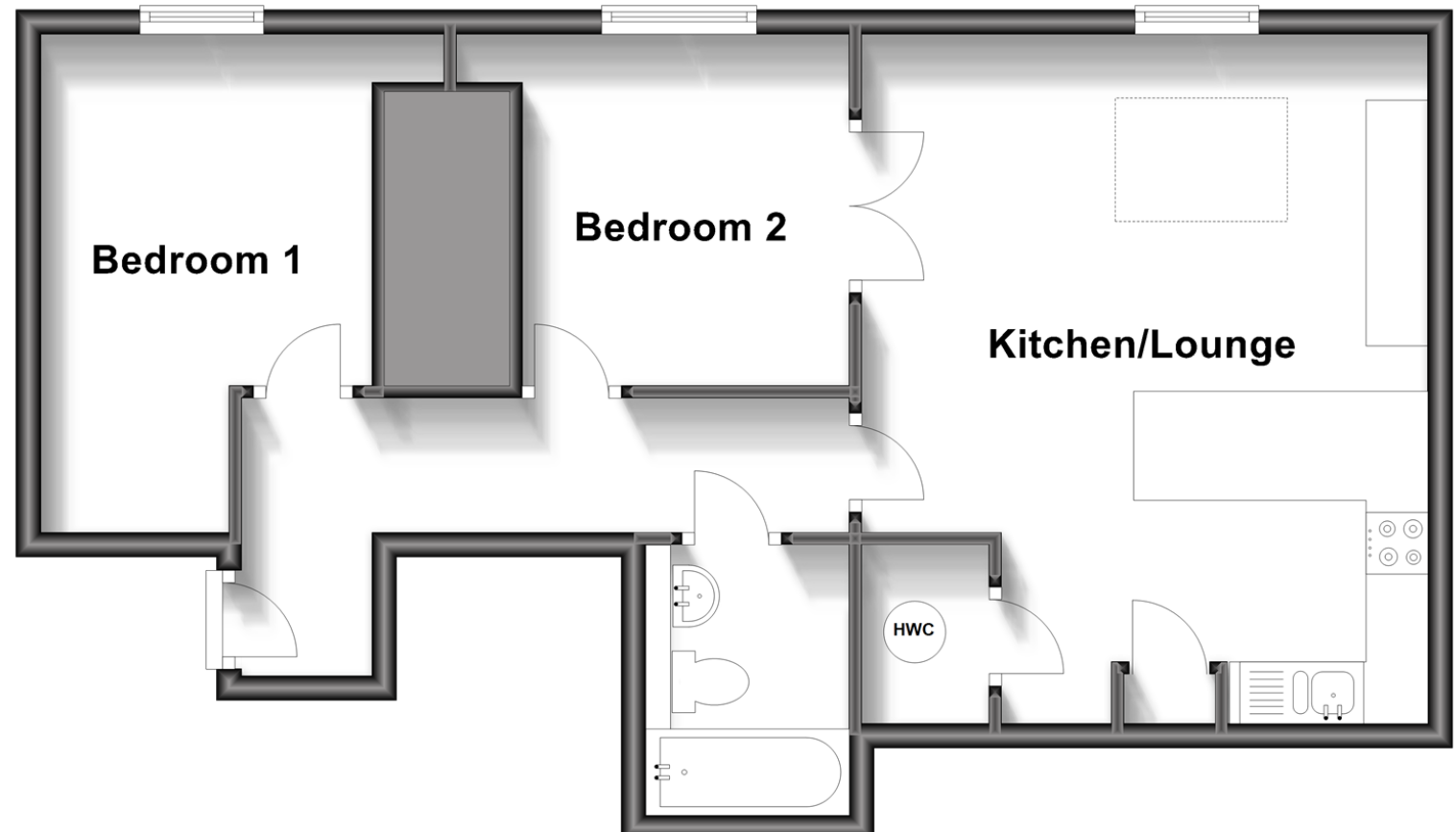
Bedroom 1: 12'4 x 8'2 (3.76m x 2.49m)

Bedroom 2: 11'1 x 7'0 (3.38m x 2.14m)

Bathroom

Fourth Floor

Approx. 57.5 sq. metres (618.6 sq. feet)



Call Folkestone - 01303 256505 ■ wardsofkent.co.uk

- If buying to let, the energy rating will need to be improved to at least 'E' rating before you can let the property
- Appliances & services are untested, dimensions are approximate and floor plans are not to scale

- Legal advice should be taken to verify fixtures/fittings, planning, alterations and/or lease details
- Through a Homewise Home For Life Plan people aged 60+ can secure this property for up to 59% less, by purchasing a Lifetime Lease.

EPC RATING	CURRENT	POTENTIAL
	F(27)	F(28)

12637479/20230816/CW/CW