



**OVER 60?**

Secure this property  
for up to **59% less!**

**Price**

**£190,000**

**Leasehold**

2x  1x  1x 

**Flat G, Manor Court,  
Manor Road, Folkestone,  
Kent, CT20**

*Wards*  
Helping you move forwards





## Main features

- Set on the top floor of this stunning former hotel
- Spacious kitchen, large lounge and separate storage room
- Rooftop views towards the hills
- Parking space paid for within ground rent
- Low service charges (£89 p/m), long lease and low council tax band (A)

## Accommodation

### TOP FLOOR

#### Entrance Hall

Lounge/Diner: 16'8 x 15'8 (5.08m x 4.78m)

Kitchen: 12'8 x 8'4 (3.86m x 2.54m)

Bedroom 1: 12'4 x 9'8 (3.76m x 2.95m)

Bedroom 2: 9'4 x 6'6 (2.85m x 1.98m)

Bathroom: 11'1 x 4'5 (3.38m x 1.35m)

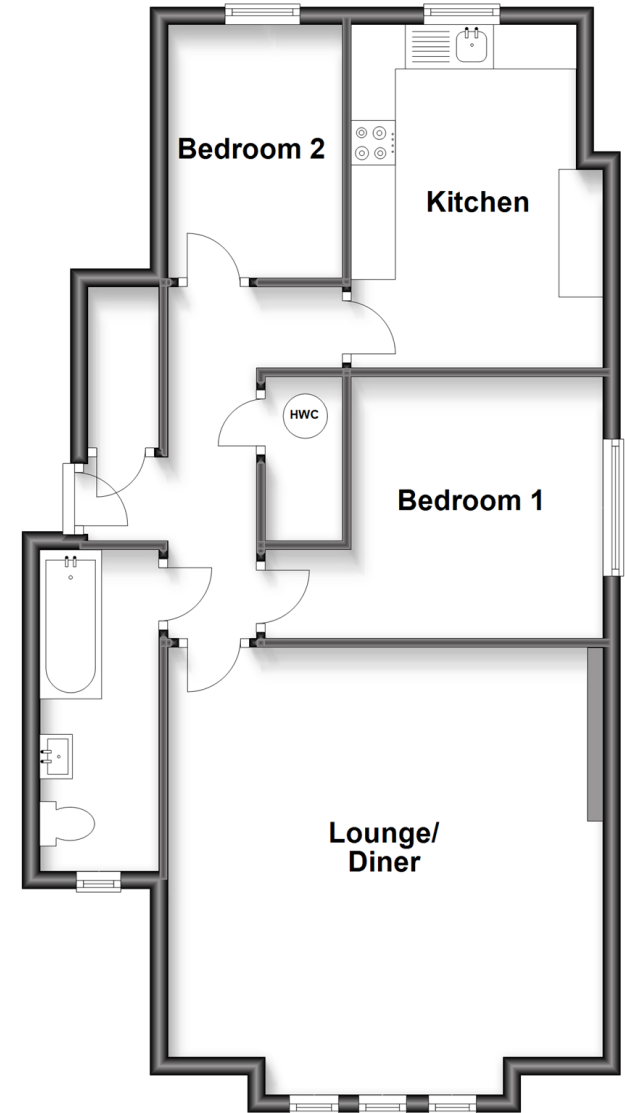
### OUTSIDE

Parking (paid in ground rent)

Storage Room

## Second Floor

Approx. 65.9 sq. metres (709.7 sq. feet)



**Call Folkestone - 01303 256505 ■ [wardsofKent.co.uk](http://wardsofKent.co.uk)**

- Legal advice should be taken to verify fixtures/fittings, planning, alterations and/or lease details
- Appliances & services are untested, dimensions are approximate and floor plans are not to scale
- Through a Homewise Home For Life Plan people aged 60+ can secure this property for up to 59% less, by purchasing a Lifetime Lease.



12637481/20230713/CW/MARK