



Price

£160,000

Leasehold

2x  1x  1x 

**Highview Park, New
Dover Road, Capel Le
Ferne, Folkestone, Kent,
CT18**

Wards
Helping you move forwards



Main features

- Driveway
- Central heating and double glazing
- Over 55's age restriction
- En-suite off of the primary bedroom
- Highly sought after development with scenic views and great walks

Accommodation

GROUND FLOOR

Hallway

Lounge: 18'3 x 10'8 (5.57m x 3.25m)

Kitchen/Dining Area: 18'6 x 8'8 (5.64m x 2.64m)

Bedroom 1: 9'9 x 9'7 (2.97m x 2.92m)

En-suite Shower Room

Bedroom 2: 9'6 x 5'5 (2.90m x 1.65m)

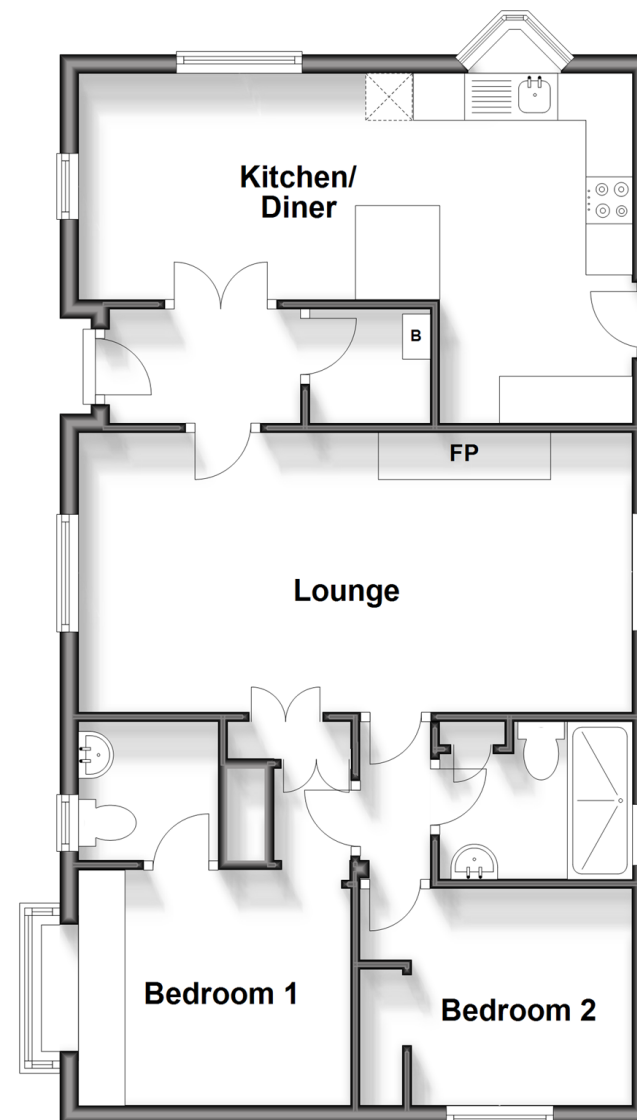
Bathroom

OUTSIDE

Patio Area

Ground Floor

Approx. 65.3 sq. metres (702.4 sq. feet)



Call Folkestone - 01303 256505 ■ wardsof Kent.co.uk

- If buying to let, the energy rating will need to be improved to at least 'E' rating before you can let the property
- Legal advice should be taken to verify fixtures/fittings, planning, alterations and/or lease details
- Appliances & services are untested, dimensions are approximate and floor plans are not to scale



12637496/20240425/OJ/CW