



Guide Price
£180,000

Freehold

1x  1x  1x 

**Gladstone Road,
Folkestone, Kent, CT19**

OVER 60?

Secure this property
for up to **59% less!**

Wards
Helping you move forwards



Main features

- Open plan living accommodation - well presented throughout - Modern kitchen and recently redecorated bathroom
- New combi boiler
- Off road parking
- Low maintenance courtyard garden
- Conveniently located close to the seafront, town and train station

Accommodation

GROUND FLOOR

Hallway

Kitchen/Lounge: 18'1" x 11'1" (5.52m x 3.38m)

FIRST FLOOR

Landing

Bedroom: 11'1" x 10'1" (3.38m x 3.08m)

Bathroom

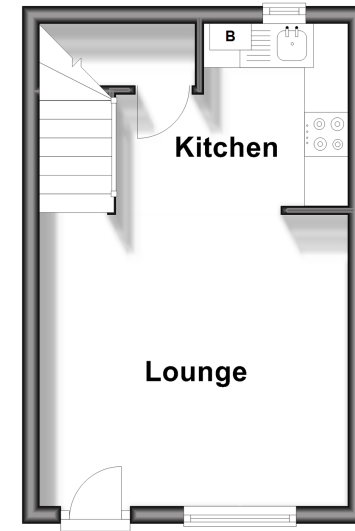
OUTSIDE

Courtyard Garden

Off Road Parking

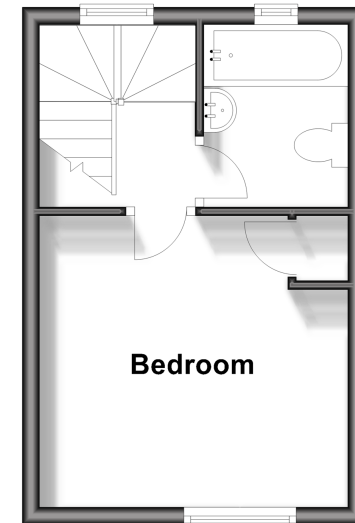
Ground Floor

Approx. 19.5 sq. metres (210.0 sq. feet)



First Floor

Approx. 19.5 sq. metres (210.0 sq. feet)



Call Folkestone - 01303 256505 ■ wardsofkennt.co.uk

- Legal advice should be taken to verify fixtures/fittings, planning, alterations and/or lease details
- Appliances & services are untested, dimensions are approximate and floor plans are not to scale
- Through a Homewise Home For Life Plan people aged 60+ can secure this property for up to 59% less, by purchasing a Lifetime Lease.



12637511/20231128/LS/CW