



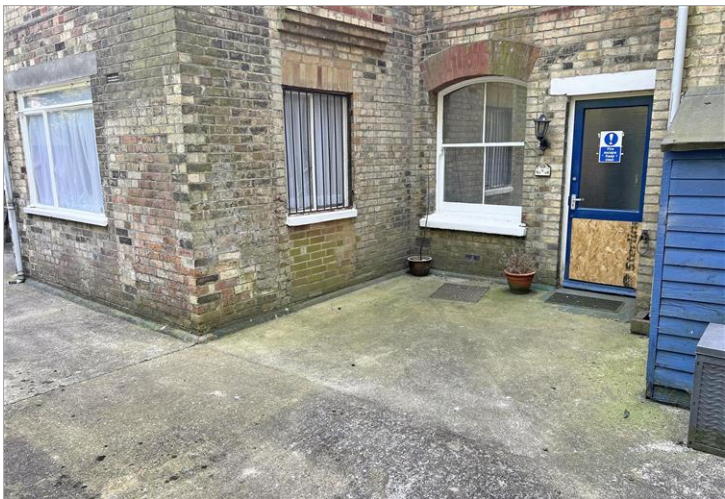
**Price**  
**£170,000**

**Leasehold**

2x  1x  1x 

**Laburnham Court,  
Westbourne Gardens,  
Folkestone, Kent, CT20**

*Wards*  
Helping you move forwards



## Main features

- Spacious lower ground floor apartment
- Low maintenance front garden and shared rear courtyard
- Packed with original features
- Sought after location, short walk to town, beach & Central train station
- Cash buyers only, 46 years remaining on lease

## Accommodation

### LOWER GROUND FLOOR

Hallway

Lounge: 16'0 x 15'0 (4.88m x 4.58m)

Kitchen: 9'1 x 9'0 (2.77m x 2.75m)

Bedroom 1: 15'1 x 10'0 (4.60m x 3.05m)

Bedroom 2: 10'1 x 9'1 (3.08m x 2.77m)

Bathroom

### OUTSIDE

Front Garden

Shared Rear Courtyard

**Call Folkestone - 01303 256505 ■ [wardsfolkent.co.uk](http://wardsfolkent.co.uk)**

- Legal advice should be taken to verify fixtures/fittings, planning, alterations and/or lease details
- Appliances & services are untested, dimensions are approximate and floor plans are not to scale



12637549/20230724/LS/CC