



Guide Price
£320,000

Freehold

4x  1x  2x 

**Bournemouth Road,
Folkestone, Kent, CT19**

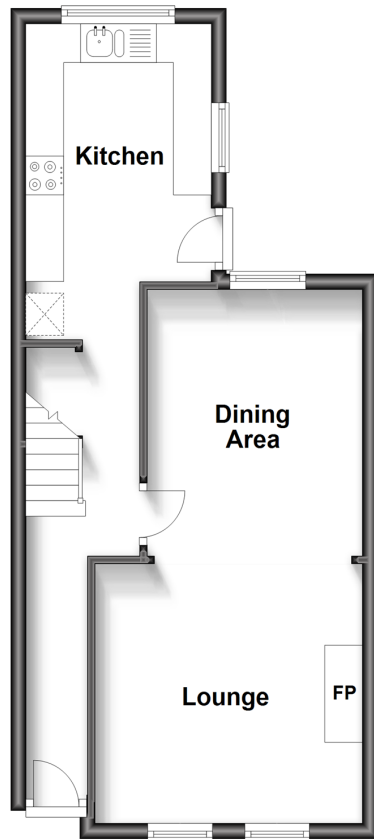
OVER 60?

Secure this property
for up to **59% less!**

Wards
Helping you move forwards

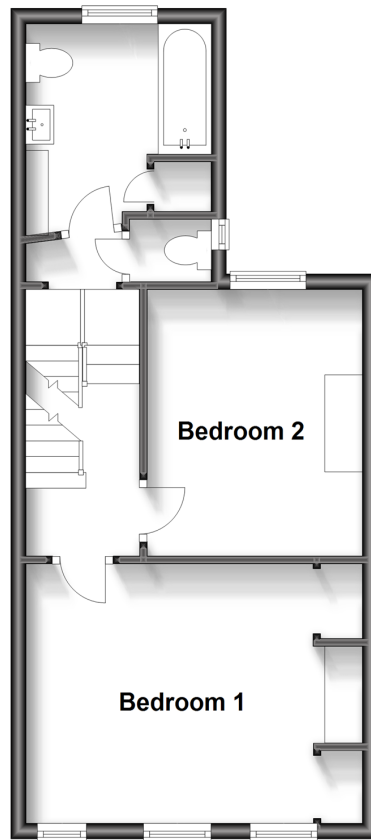
Ground Floor

Approx. 38.6 sq. metres (415.5 sq. feet)



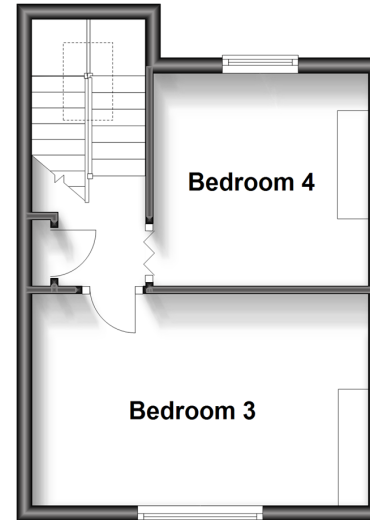
First Floor

Approx. 38.9 sq. metres (419.0 sq. feet)



Second Floor

Approx. 25.8 sq. metres (277.6 sq. feet)



Accommodation

GROUND FLOOR

Hallway

Lounge: 11'8 x 10'11 (3.56m x 3.33m)

Dining Room: 11'9 x 9'4 (3.58m x 2.85m)

Kitchen: 10'10 x 8'0 (3.30m x 2.44m)

FIRST FLOOR

Landing: 8'9 x 7'5 (2.67m x 2.26m)

Bathroom

Separate Toilet

Bedroom 1: 14'9 x 11'1 (4.50m x 3.38m)

Bedroom 2: 11'1 x 9'4 (3.38m x 2.85m)

SECOND FLOOR

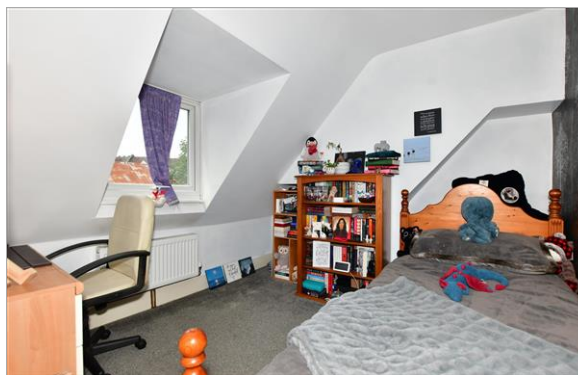
Landing

Bedroom 3: 15'2 x 8'11 (4.63m x 2.72m)

Bedroom 4: 9'7 x 9'1 (2.92m x 2.77m)

OUTSIDE

Rear Garden



Main features

- Short walk to Radnor Park, great schools, town and the Harbour Arm
- On the doorstep of Folkestone Central Train Station with direct access to London St Pancras
- Low maintenance sunny rear garden, perfect for those summer barbecues
- Spacious and extremely versatile living accommodation
- Modern bathroom



Nearest Schools

Primary Schools: Folkestone Christ Church CofE Primary 0.1 miles, Stella Maris Catholic Primary 0.2 miles, Park Farm Primary 0.3 miles

Secondary Schools: Highview School 0.3 miles, Oakwood



Transport Information

Train Stations: Folkestone Central 0.2 miles, Folkestone West High Speed Link 0.9 miles, Sandling 4.7 miles



Address

Bournemouth Road, Folkestone, Kent, CT19



Directions

For directions to this property please contact us.



Wards
Helping you move forwards

Call Folkestone Branch 01303 256505 ■ wardsofkent.co.uk



■ Legal advice should be taken to verify fixtures/fittings, planning, alterations and/or lease details ■ Appliances & services are untested, dimensions are approximate and floor plans are not to scale
■ Through a Homewise Home For Life Plan people aged 60+ can secure this property for up to 59% less, by purchasing a Lifetime Lease.



12637565/20231115/CC/CC