



**Price**  
**£80,000**

**Leasehold**

1x  1x  1x 

**Court Place, Castle Hill  
Avenue, Folkestone,  
Kent, CT20**

*Wards*  
Helping you move forwards





## Main features

- Guest suite and laundry room
- Modernised throughout with walk in shower
- Fourth floor with lift access and emergency pull cords
- Close walk to town centre and the Leas
- Stunning views over the cliff

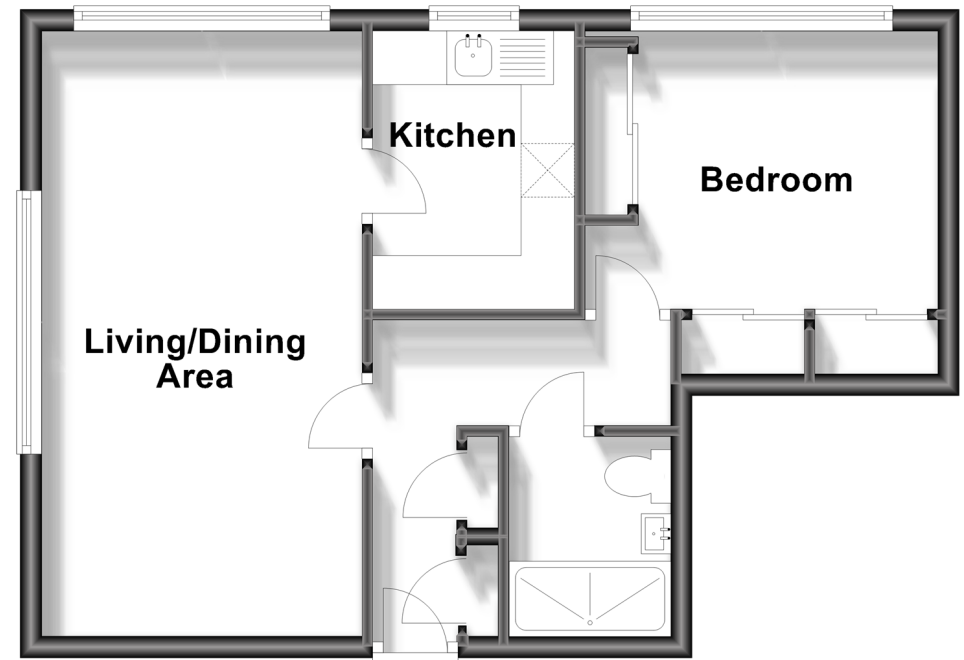
## Accommodation

### FOURTH FLOOR

Hallway  
 Living/Dining Area: 17'1 x 9'9 (5.21m x 2.97m)  
 Kitchen: 8'6 x 6'2 (2.59m x 1.88m)  
 Bedroom : 10'1 x 8'6 (3.08m x 2.59m)  
 Bathroom

## Fourth Floor

Approx. 41.2 sq. metres (443.0 sq. feet)



Call Folkestone - 01303 256505 ■ [wardsofkennt.co.uk](http://wardsofkennt.co.uk)

■ Legal advice should be taken to verify fixtures/fittings, planning, alterations and/or lease details

■ Appliances & services are untested, dimensions are approximate and floor plans are not to scale



12637626/20240514/CW/CW