



Price
£375,000

Freehold

5x  1x  2x 

**Victoria Road,
Folkestone, Kent, CT19**

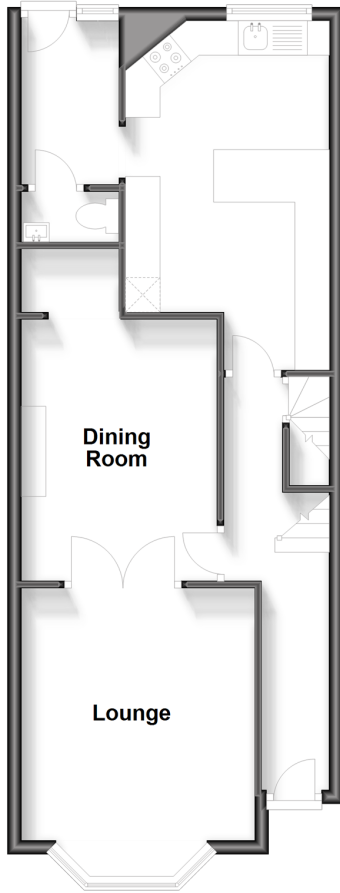
OVER 60?

Secure this property
for up to **59% less!**

Wards
Helping you move forwards

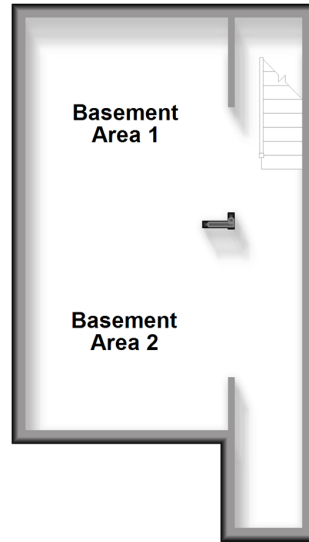
Split Level Ground Floor

Approx. 38.3 sq. metres (412.0 sq. feet)



Basement

Approx. 25.3 sq. metres (272.5 sq. feet)



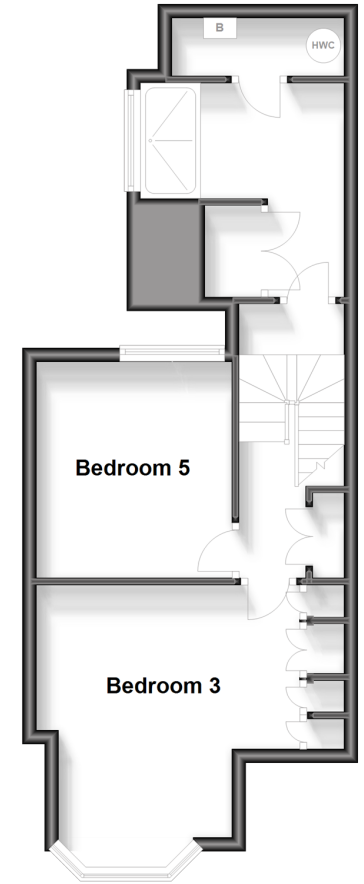
First Floor

Approx. 46.7 sq. metres (503.0 sq. feet)



Split Level Second Floor

Approx. 41.4 sq. metres (445.5 sq. feet)



Accommodation

SPLIT LEVEL GROUND FLOOR

Hallway
Lounge: 14'1 x 10'0 (4.30m x 3.05m)
Dining Room: 12'0 x 8'1 (3.66m x 2.47m)
Kitchen: 13'1 x 9'0 (3.99m x 2.75m)
Utility Room: 7'0 x 4'1 (2.14m x 1.25m)
Downstairs Toilet

BASEMENT

Basement Hallway
Basement Area 1
Basement Area 2

FIRST FLOOR

Landing
Bedroom 1: 13'1 x 12'0 (3.99m x 3.66m)
Bedroom 2: 12'0 x 8'1 (3.66m x 2.47m)
Bedroom 4: 10'0 x 9'0 (3.05m x 2.75m)
Separate Toilet

SPLIT LEVEL SECOND FLOOR

Landing
Bedroom 3: 14'1 x 12'0 (4.30m x 3.66m)
Bedroom 5: 10'1 x 8'1 (3.08m x 2.47m)
Bathroom

OUTSIDE

Rear Garden



Main features

- Short walk to Radnor Park, great schools, town and Harbour Arm
- Spacious/versatile
- Modern kitchen, utility room and cellar, ideal for games room/home office
- On doorsteps of Folkestone Central Station - direct access to London St Pancras
- Low maintenance rear garden, perfect for summer barbeques



Nearest Schools

Primary Schools: Folkestone Christ Church CofE Primary 0.4 miles, Stella Maris Catholic Primary 0.4 miles

Secondary Schools: The Harvey Grammar School 1.0 miles, The Folkestone School for Girls 1.7 miles



Transport Information

Train Stations: Folkestone Central 0.4 miles, Folkestone West High Speed Link 1.3 miles, Dover Priory 6.3 miles



Address

Victoria Road, Folkestone, Kent, CT19



Directions

For directions to this property please contact us.



Wards
Helping you move forwards

Call Folkestone Branch 01303 256505 ■ wardsofkennt.co.uk



■ Legal advice should be taken to verify fixtures/fittings, planning, alterations and/or lease details ■ Appliances & services are untested, dimensions are approximate and floor plans are not to scale
■ Through a Homewise Home For Life Plan people aged 60+ can secure this property for up to 59% less, by purchasing a Lifetime Lease.



12637654/20231011/LS1/CC