



OVER 60?

Secure this property
for up to **59% less!**

Price

£500,000

Leasehold

3x  1x  1x 

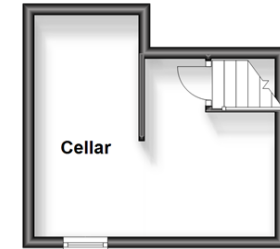
**Godwyn Road,
Folkestone, Kent, CT20**

Wards
Helping you move forwards

Ground Floor
Approx. 211.6 sq. metres (2278.1 sq. feet)



Basement
Approx. 15.0 sq. metres (161.1 sq. feet)



Accommodation

GROUND FLOOR

Communal Hallway
Cloakroom
Hallway
Lounge: 21'1 x 14'1 (6.43m x 4.30m)
Dining Area: 13'0 x 12'1 (3.97m x 3.69m)
Kitchen: 18'1 x 8'2 (5.52m x 2.49m)
Conservatory: 20'9 x 12'2 (6.33m x 3.71m)

Bedroom 1: 18'1 x 16'1 (5.52m x 4.91m)
Bedroom 2: 15'5 x 15'1 (4.70m x 4.60m)
Bedroom 3/Study: 12'9 x 9'9 (3.89m x 2.97m)
Bathroom
Garage: 15'0 x 8'6 (4.58m x 2.59m)
Lean-to

BASEMENT

Cellar: 13'5 x 12'1 (4.09m x 3.69m)

OUTSIDE

Rear Garden



Main features

- Set in a stunning picturesque, leafy, tree lined road
- Spacious and extremely versatile apartment - beautiful original features
- Large sunny private rear garden and stunning conservatory perfect for those summer evenings
- Garage and off-road parking
- Highly sought after area, a very short walk to Folkestone West train station



Nearest Schools

Primary Schools: Lympe C of E Primary 0.5 miles, Sandgate Primary 0.7 miles

Secondary Schools: The Folkestone School for Girls 0.6 miles, The Harvey Grammar School 0.6 miles



Transport Information

Train Stations: Folkestone West High Speed Link 0.5 miles, Folkestone Central 0.8 miles, Dover Priory 7.0 miles



Address

Godwyn Road, Folkestone, Kent, CT20



Directions

For directions to this property please contact us.



Wards
Helping you move forwards

Call Folkestone Branch 01303 256505 ■ wardsofkent.co.uk



■ Legal advice should be taken to verify fixtures/fittings, planning, alterations and/or lease details ■ Appliances & services are untested, dimensions are approximate and floor plans are not to scale
■ Through a Homewise Home For Life Plan people aged 60+ can secure this property for up to 59% less, by purchasing a Lifetime Lease.



12637657/20231030/CW/CC