



OVER 60?

Secure this property
for up to **59% less!**

Price
£280,000

Freehold

3x  1x  2x 

**Greenfield Road,
Folkestone, Kent, CT19**

Wards
Helping you move forwards



Main features

- Large rear garden
- Situated in a quiet and popular location
- Well presented throughout with added utility room
- Chain free
- Close to local amenities and good transport links

Accommodation

GROUND FLOOR

Entrance Porch

Hallway

Lounge: 13'1 x 9'9 (3.99m x 2.97m)

Dining Area: 11'7 x 9'9 (3.53m x 2.97m)

Kitchen: 8'2 x 4'10 (2.49m x 1.47m)

Utility Room: 10'1 x 7'7 (3.08m x 2.31m)

FIRST FLOOR

Landing

Bedroom 1: 11'7 x 10'0 (3.53m x 3.05m)

Bedroom 2: 10'6 x 8'0 (3.20m x 2.44m)

Bedroom 3: 5'7 x 5'0 (1.70m x 1.53m)

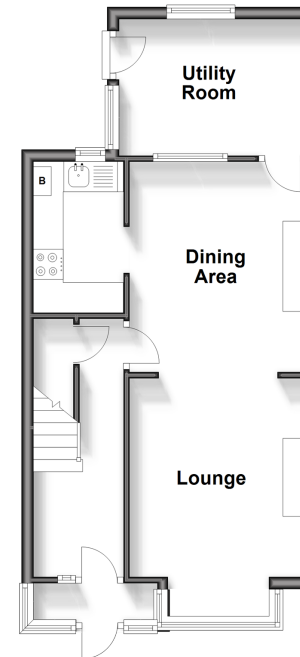
Bathroom

OUTSIDE

Rear Garden

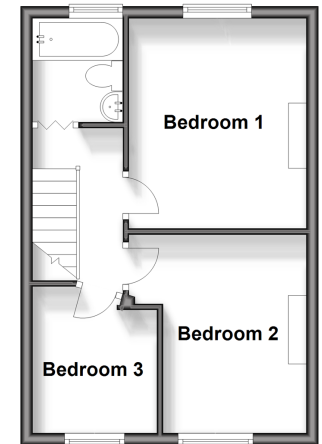
Split Level Ground Floor

Approx. 40.9 sq. metres (440.8 sq. feet)



First Floor

Approx. 31.5 sq. metres (339.2 sq. feet)



Call Folkestone - 01303 256505 ■ wardsof Kent.co.uk

- Legal advice should be taken to verify fixtures/fittings, planning, alterations and/or lease details
- Appliances & services are untested, dimensions are approximate and floor plans are not to scale
- Through a Homewise Home For Life Plan people aged 60+ can secure this property for up to 59% less, by purchasing a Lifetime Lease.



12637668/20231218/LS/CC