



OVER 60?

Secure this property
for up to **59% less!**

Price

£260,000

Freehold

2x  1x  1x 

**Dragonfly Way,
Hawkinge, Folkestone,
Kent, CT18**

Wards
Helping you move forwards



Main features

- Contemporary style
- Ultra modern garden office
- Ready to move straight into
- Off road parking for two cars
- Perfect for first time buyers, in a sought after location in Hawkinge

Accommodation

GROUND FLOOR

Hallway

Lounge: 15'3 x 12'4 (4.65m x 3.76m)

Kitchen: 12'4 x 8'2 (3.76m x 2.49m)

FIRST FLOOR

Landing

Bedroom 1: 12'4 x 11'1 (3.76m x 3.38m)

Bedroom 2: 11'8 x 6'1 (3.56m x 1.86m)

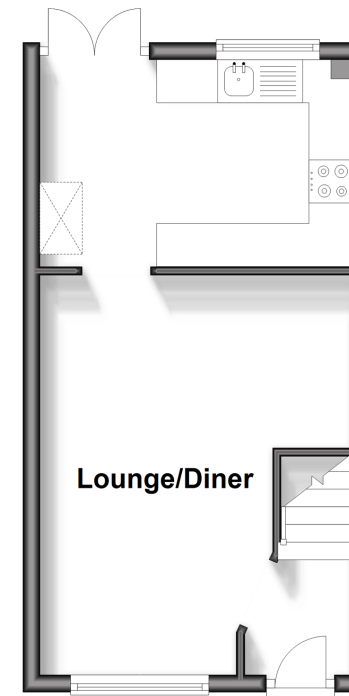
Bathroom

OUTSIDE

Rear Garden

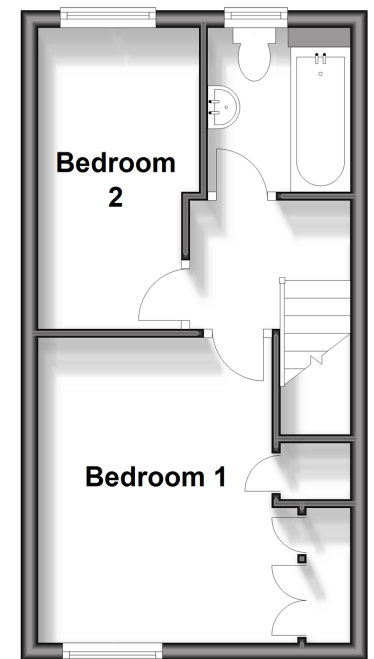
Ground Floor

Approx. 26.2 sq. metres (281.7 sq. feet)



First Floor

Approx. 26.2 sq. metres (281.7 sq. feet)



Call Folkestone - 01303 256505 ■ wardsofkennt.co.uk

- Legal advice should be taken to verify fixtures/fittings, planning, alterations and/or lease details
- Appliances & services are untested, dimensions are approximate and floor plans are not to scale
- Through a Homewise Home For Life Plan people aged 60+ can secure this property for up to 59% less, by purchasing a Lifetime Lease.



12637701/20240330/LS/CW