



**Guide Price**  
**£170,000**

**Leasehold**

1x  1x  1x 

**Southover Court,  
Wilberforce Road,  
Sandgate, Folkestone,  
Kent, CT20**

**OVER 60?**

Secure this property  
for up to **59% less!**

*Wards*  
Helping you move forwards





## Main features

- Immaculate and ready to move into
- Stones throw from the award winning Sandgate beach
- Open plan lounge/diner
- Plenty of storage space
- Highly sought after location

## Accommodation

### GROUND FLOOR

Hallway

Lounge/Diner: 16'8 x 12'5 (5.08m x 3.79m)

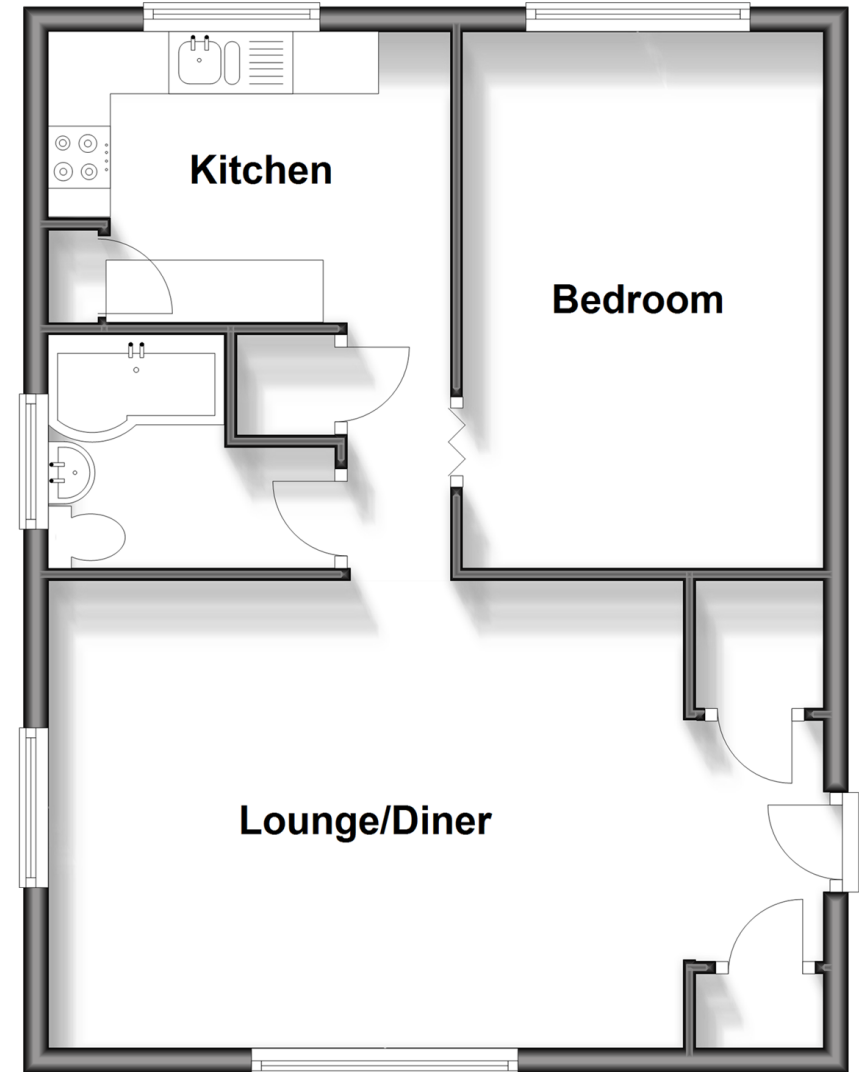
Kitchen: 10'7 x 7'2 (3.23m x 2.19m)

Bedroom: 13'1 x 8'1 (3.99m x 2.47m)

Bathroom

## Ground Floor

Approx. 51.1 sq. metres (549.9 sq. feet)



**Call Folkestone - 01303 256505 ■ [wardsofkennt.co.uk](http://wardsofkennt.co.uk)**

- Legal advice should be taken to verify fixtures/fittings, planning, alterations and/or lease details
- Appliances & services are untested, dimensions are approximate and floor plans are not to scale
- Through a Homewise Home For Life Plan people aged 60+ can secure this property for up to 59% less, by purchasing a Lifetime Lease.



12637720/20240229/ET/CW