



Price
£350,000

Freehold

3x  1x  1x 

**Shaftesbury Avenue,
Folkestone, Kent, CT19**

OVER 60?

Secure this property
for up to **59% less!**

Wards
Helping you move forwards



Main features

- Generously sized property with detached garage, with annex, converted from former garage
- Enclosed rear garden
- Newly fitted kitchen and bathroom
- Conservatory
- Situated in a quiet and popular location, close to local amenities and transport links

Accommodation

GROUND FLOOR

Entrance Hallway

Lounge: 16'0 x 11'1 (4.88m x 3.38m)

Kitchen: 12'0 x 7'0 (3.66m x 2.14m)

Lean to/Conservatory: 12'1 x 3'1 (3.69m x 0.94m)

Storage cupboard: 9'0 x 1'1 (2.75m x 0.33m)

Utility Area: 11'0 x 5'0 (3.36m x 1.53m)

Bedroom 1: 15'1 x 11'0 (4.60m x 3.36m)

Bedroom 2: 12'1 x 12'0 (3.69m x 3.66m)

Bedroom 3: 9'1 x 9'1 (2.77m x 2.77m)

Bathroom: 7'1 x 7'0 (2.16m x 2.14m)

Separate Toilet: 5'0 x 4'1 (1.53m x 1.25m)

Annex (Former Garage): 16'0 x 10'1 (4.88m x 3.08m)

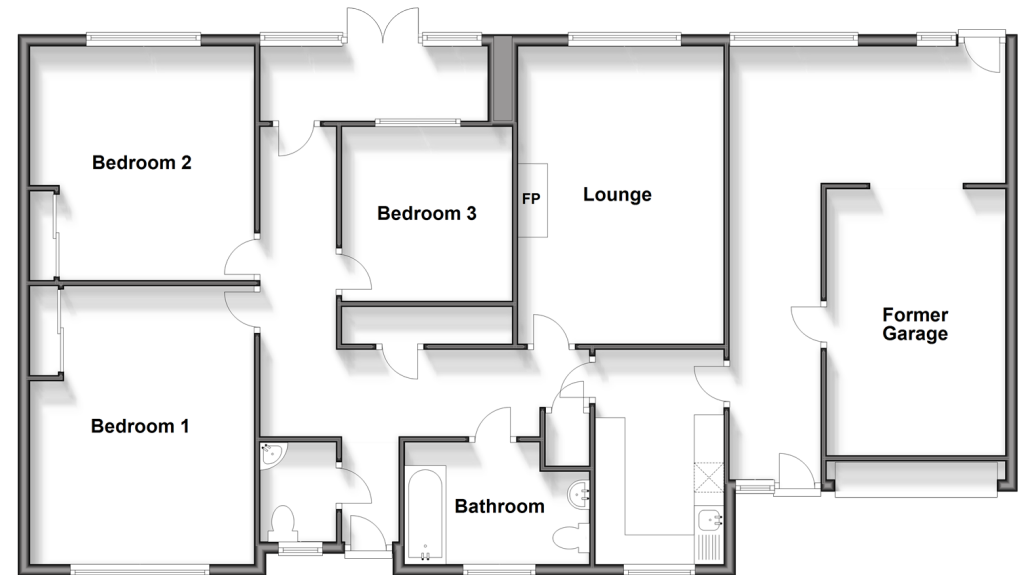
Annex Kitchen Area: 15'1 x 7'0 (4.60m x 2.14m)

OUTSIDE

Detached Garage

Rear Garden

Ground Floor
Approx. 137.6 sq. metres (1481.4 sq. feet)



Call Folkestone - 01303 256505 ■ wardsofkent.co.uk

- Legal advice should be taken to verify fixtures/fittings, planning, alterations and/or lease details
- Through a Homewise Home For Life Plan people aged 60+ can secure this property for up to 59% less, by purchasing a Lifetime Lease.

■ Appliances & services are untested, dimensions are approximate and floor plans are not to scale