



Price
£230,000

Leasehold

2x  1x  1x 

**Aston Court, Trinity
Gardens, Folkestone,
Kent, CT20**

OVER 60?

Secure this property
for up to **59% less!**

Wards
Helping you move forwards



Main features

- Allocated parking for one car
- Lift
- Well presented throughout
- Located within walking distance of the train station and town
- Recently converted in 2020

Accommodation

FIRST FLOOR

Hallway

Lounge: 16'6 x 14'8 (5.03m x 4.47m)

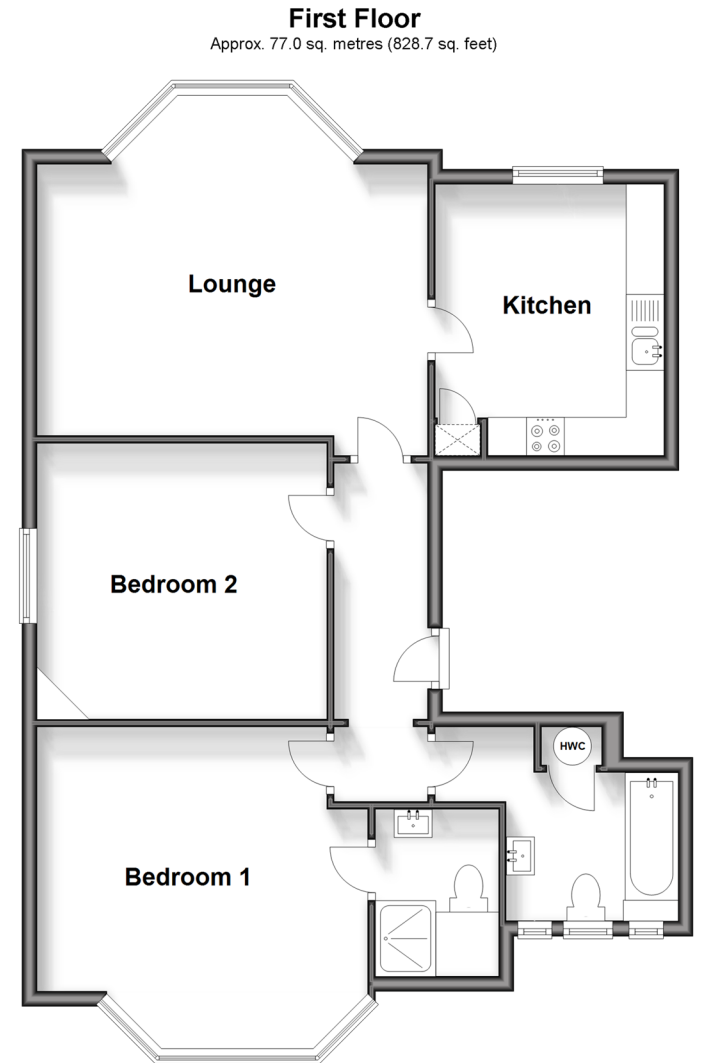
Kitchen: 11'2 x 9'9 (3.41m x 2.97m)

Bedroom 1: 14'9 x 14'0 (4.50m x 4.27m)

En-suite

Bedroom 2: 12'4 x 12'0 (3.76m x 3.66m)

Bathroom



Call Folkestone - 01303 256505 ■ wardsofkent.co.uk

- Legal advice should be taken to verify fixtures/fittings, planning, alterations and/or lease details
- Appliances & services are untested, dimensions are approximate and floor plans are not to scale
- Through a Homewise Home For Life Plan people aged 60+ can secure this property for up to 59% less, by purchasing a Lifetime Lease.



12637782/20240326/OJ/CC