



**Price**

**£210,000**

**Freehold**

2x  1x  1x 

**Cromwell Park Place,  
Folkestone, Kent, CT20**

*Wards*  
Helping you move forwards





## Main features

- Two allocated parking spaces
- Recently refurbished bathroom
- Modern kitchen
- Low maintenance garden
- Well presented throughout

## Accommodation

### GROUND FLOOR

Hallway

Lounge: 13'6 x 12'0 (4.12m x 3.66m)

Kitchen: 12'2 x 6'0 (3.71m x 1.83m)

### FIRST FLOOR

Landing

Bedroom 1: 10'6 x 8'6 (3.20m x 2.59m)

Bedroom 2: 8'8 x 5'6 (2.64m x 1.68m)

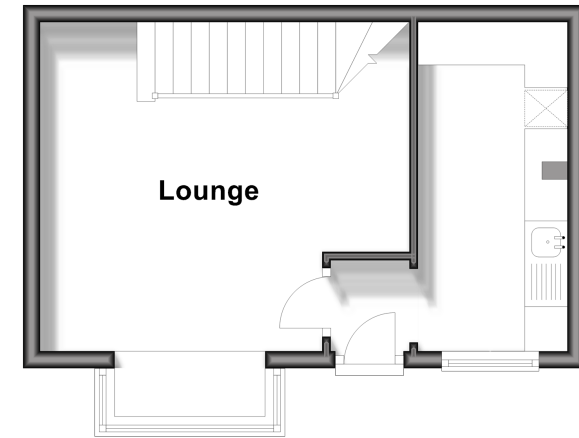
Bathroom

### OUTSIDE

Front Garden

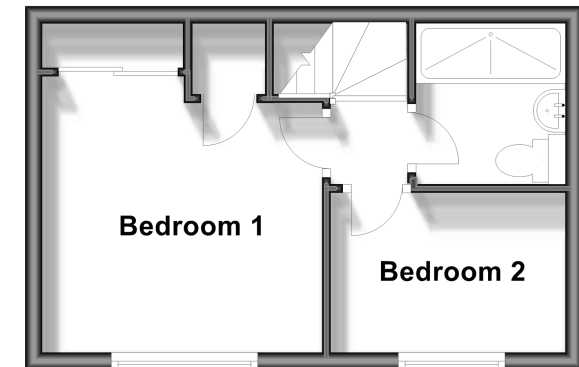
## Ground Floor

Approx. 24.4 sq. metres (263.0 sq. feet)



## First Floor

Approx. 23.6 sq. metres (253.7 sq. feet)



**Call Folkestone - 01303 256505 ■ [wardsfolkent.co.uk](http://wardsfolkent.co.uk)**

- Legal advice should be taken to verify fixtures/fittings, planning, alterations and/or lease details
- Appliances & services are untested, dimensions are approximate and floor plans are not to scale



12637791/20240425/LS/CC