



Guide Price
£290,000

Leasehold

2x  1x  1x 

**Castle Hill Avenue,
Folkestone, Kent, CT20**

OVER 60?

Secure this property
for up to **59% less!**

Wards
Helping you move forwards



Main features

- **Luxury renovation**
- **Highly sought after location in the heart of the West End**
- **Impressive lounge/diner**
- **Garage and off road parking**
- **Oozing character in every room**

Accommodation

FIRST FLOOR

Hallway

Kitchen: 10'0 x 9'6 (3.05m x 2.90m)

Lounge/Diner: 23'1 x 16'6 (7.04m x 5.03m)

Bedroom 1: 16'9 x 14'0 (5.11m x 4.27m)

Bedroom 2: 10'6 x 10'5 (3.20m x 3.18m)

Bathroom: 9'4 x 5'4 (2.85m x 1.63m)

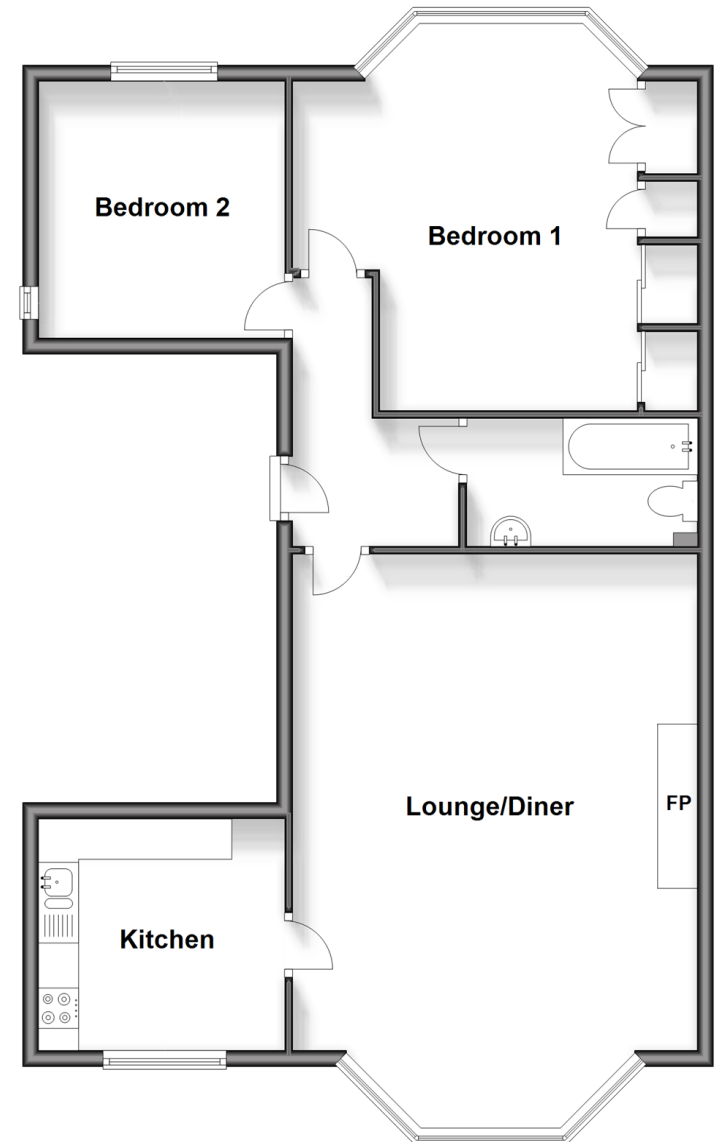
OUTSIDE

Garage

Allocated Parking Space

First Floor

Approx. 81.5 sq. metres (877.4 sq. feet)



Call Folkestone - 01303 256505 ■ wardsofkennt.co.uk

- Legal advice should be taken to verify fixtures/fittings, planning, alterations and/or lease details
- Appliances & services are untested, dimensions are approximate and floor plans are not to scale
- Through a Homewise Home For Life Plan people aged 60+ can secure this property for up to 59% less, by purchasing a Lifetime Lease.



12637858/20240417/CW/LS1