



Price

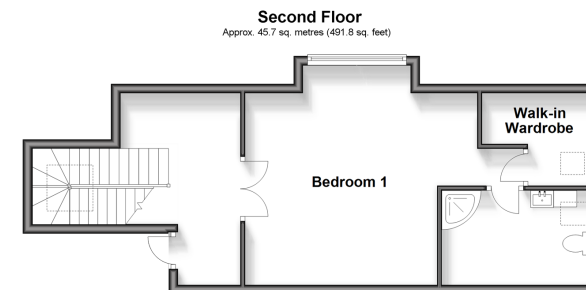
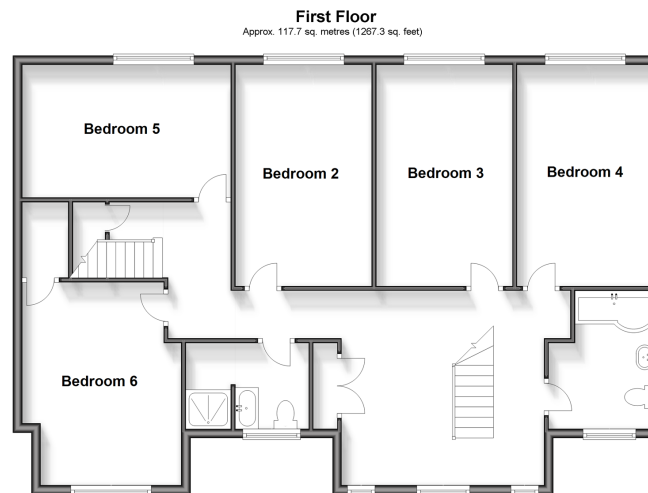
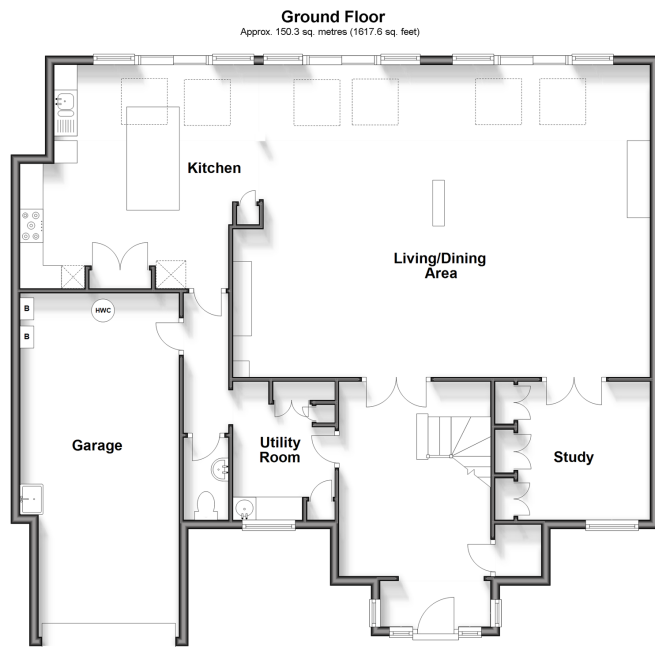
£1,250,000

Freehold

6x  3x  1x 

**Cherry Garden Lane,
Folkestone, Kent, CT19**

Wards
Helping you move forwards



Accommodation

GROUND FLOOR

Entrance Hall
Hallway
Living/Dining Area: 28'7 x 22'0 (8.72m x 6.71m)
Kitchen: 16'0 x 15'0 (4.88m x 4.58m)
Study
Utility Room
Cloakroom

FIRST FLOOR

Landing
Bedroom 2: 16'0 x 9'8 (4.88m x 2.95m)
Bedroom 3: 16'0 x 9'8 (4.88m x 2.95m)
Bedroom 4: 16'0 x 9'8 (4.88m x 2.95m)
Bedroom 5: 15'1 x 9'8 (4.60m x 2.95m)
Bedroom 6: 14'6 x 11'5 (4.42m x 3.48m)
Bathroom
Shower Room

SECOND FLOOR

Bedroom 1: 20'0 x 16'2 (6.10m x 4.93m)
En-suite
Walk-In Wardrobe

OUTSIDE

Garage
Driveway
Rear Garden



Main features

- Incredibly sought after location, less than half a mile from Folkestone West Train Station
- Walking distance of primary/secondary schools
- Solar panels and electric charging point
- 6 double bedrooms, 2 bathrooms and an en-suite
- Open plan living accommodation with separate study and utility room
- Large landscaped rear garden with outbuilding, ideal for home office or gym



Nearest Schools

Primary Schools: Morehall Primary 0.4 miles, Harcourt Primary 0.8 miles

Secondary Schools: The Harvey Grammar School 0.4 miles, The Folkestone School for Girls 1.4 miles



Transport Information

Train Stations: Folkestone West High Speed Link 0.6 miles, Folkestone Central 1.2 miles, Sandling 6.4 miles



Address

Cherry Garden Lane, Folkestone, Kent, CT19



Directions

For directions to this property please contact us.



Call Folkestone Branch 01303 256505 ■ wardsofkent.co.uk



■ Legal advice should be taken to verify fixtures/fittings, planning, alterations and/or lease details ■ Appliances & services are untested, dimensions are approximate and floor plans are not to scale



12637867/20240313/CC/CC