



**OVER 60?**

Secure this property  
for up to **59% less!**

**Price**  
**£230,000**

**Freehold**

2x  1x  2x 

**Dover Road, Folkestone,  
Kent, CT19**

*Wards*  
Helping you move forwards





## Main features

- Ideal first time buy or investment property
- Short walk to beach
- Convenient location
- Close to town and local schools
- Spacious living accommodation

## Accommodation

### GROUND FLOOR

Hallway

Lounge: 11'7 x 10'1 (3.53m x 3.08m)

Dining Area: 14'2 x 11'5 (4.32m x 3.48m)

Kitchen: 9'1 x 7'9 (2.77m x 2.36m)

### FIRST FLOOR

Landing

Bedroom 1: 14'2 x 11'1 (4.32m x 3.38m)

Bedroom 2: 11'7 x 8'1 (3.53m x 2.47m)

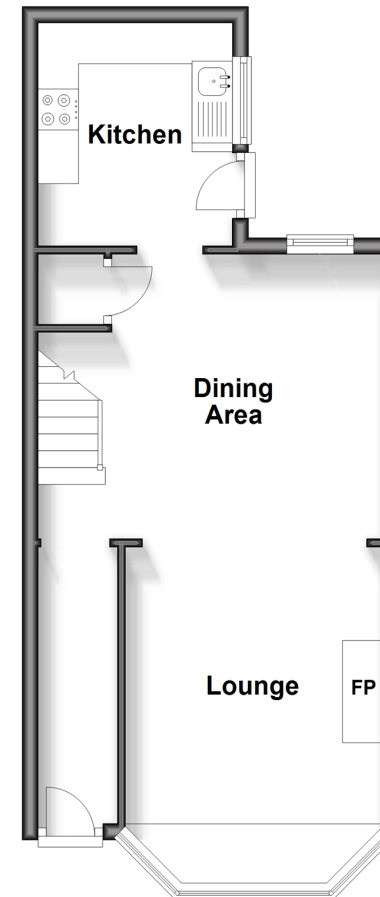
Bathroom

### OUTSIDE

Front & Rear Gardens

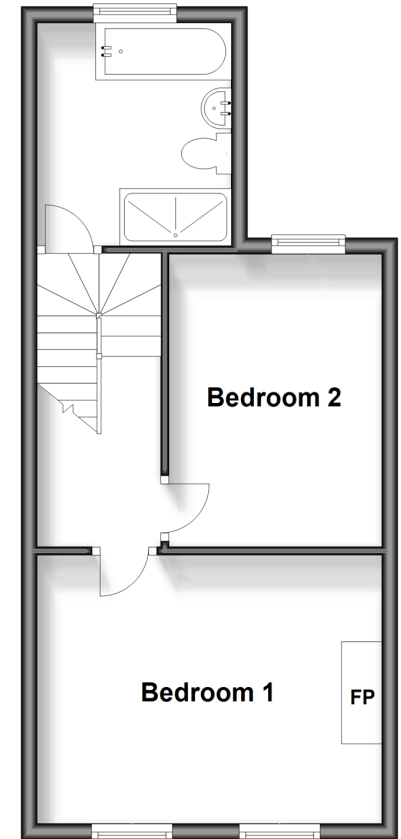
### Ground Floor

Approx. 37.2 sq. metres (400.2 sq. feet)



### First Floor

Approx. 36.5 sq. metres (393.2 sq. feet)



**Call Folkestone - 01303 256505 ■ [wardsofkennt.co.uk](http://wardsofkennt.co.uk)**

- Legal advice should be taken to verify fixtures/fittings, planning, alterations and/or lease details
- Appliances & services are untested, dimensions are approximate and floor plans are not to scale
- Through a Homewise Home For Life Plan people aged 60+ can secure this property for up to 59% less, by purchasing a Lifetime Lease.



12637872/20240420/LS/LS1