



OVER 60?

Secure this property
for up to **59% less!**

Price

£300,000

Freehold

2x  1x  1x 

**Foster Way, Folkestone,
Kent, CT20**

Wards
Helping you move forwards



Main features

- Contemporary style
- Ready to move straight into
- Off road parking for one car
- Perfect for first time buyers
- Sought after central location

Accommodation

GROUND FLOOR

Hallway
Lounge/Diner: 15'7 x 13'8 (4.75m x 4.17m)
Kitchen: 10'6 x 6'3 (3.20m x 1.91m)
Separate Toilet

FIRST FLOOR

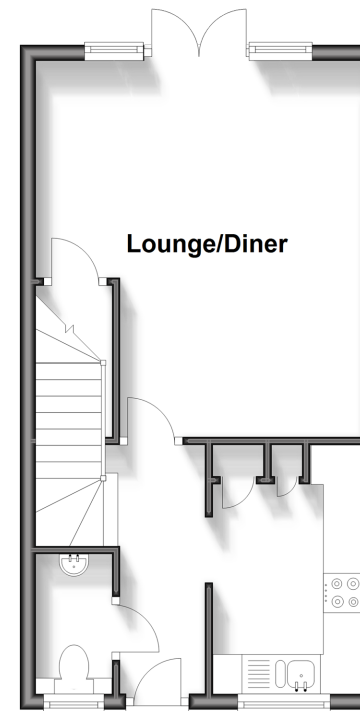
Landing
Bedroom 1: 10'1 x 9'2 (3.08m x 2.80m)
En-suite
Bedroom 2: 13'8 x 8'1 (4.17m x 2.47m)
Bathroom

OUTSIDE

Rear Garden
Allocated Parking

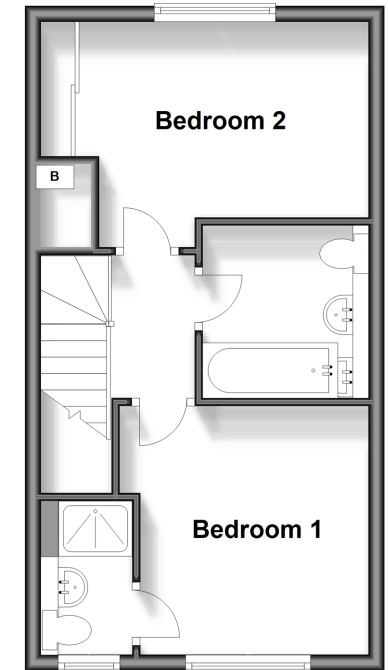
Ground Floor

Approx. 33.4 sq. metres (359.1 sq. feet)



First Floor

Approx. 33.4 sq. metres (359.1 sq. feet)



Call Folkestone - 01303 256505 ■ wardsof Kent.co.uk

- Legal advice should be taken to verify fixtures/fittings, planning, alterations and/or lease details
- Appliances & services are untested, dimensions are approximate and floor plans are not to scale
- Through a Homewise Home For Life Plan people aged 60+ can secure this property for up to 59% less, by purchasing a Lifetime Lease.



12637884/20240327/LS/LS1