



**Price**  
**£650,000**

**Freehold**

4x  2x  2x 

**Plough Wents Road,  
Chart Sutton, Maidstone,  
Kent, ME17**

**OVER 60?**

Secure this property  
for up to **59% less!**

*Wards*  
Helping you move forwards





## Main features

- Immaculately presented with modern decor throughout
- Large driveway and double garage
- Stunning private rear garden
- Spacious throughout and extended to the rear, ideal for entertaining
- Set in the picturesque village of Chart Sutton nearby to local schools and amenities

## Accommodation

### GROUND FLOOR

Entrance Hall

Lounge: 19'0 x 11'9 (5.80m x 3.58m)

Kitchen/Diner: 27'9 x 9'8 (8.46m x 2.95m)

Family Area: 13'7 x 12'3 (4.14m x 3.74m)

Utility: 8'4 x 4'4 (2.54m x 1.32m)

Cloakroom

### FIRST FLOOR

Landing

Bedroom 1: 18'2 x 11'9 (5.54m x 3.58m)

En-suite Shower Room

Bedroom 2: 10'7 x 10'3 (3.23m x 3.13m)

Bedroom 3: 12'0 x 8'8 (3.66m x 2.64m)

Bedroom 4: 12'8 x 8'8 (3.86m x 2.64m)

Bathroom

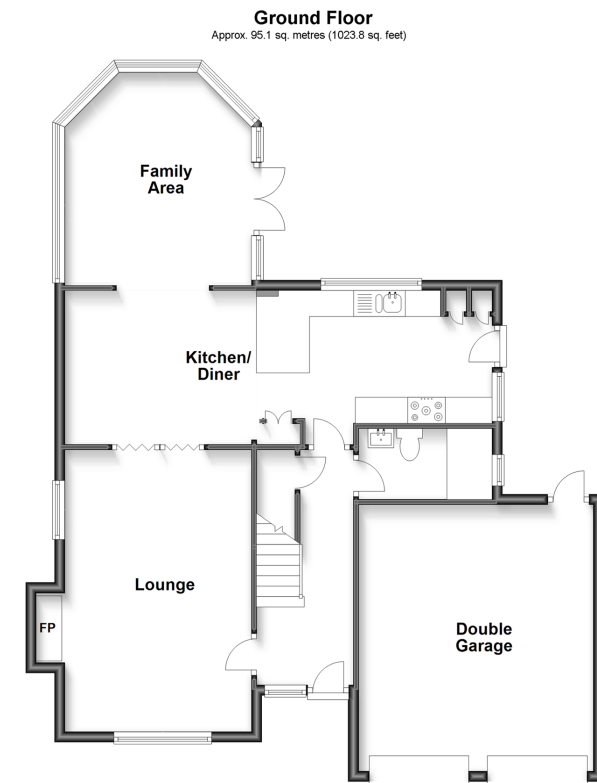
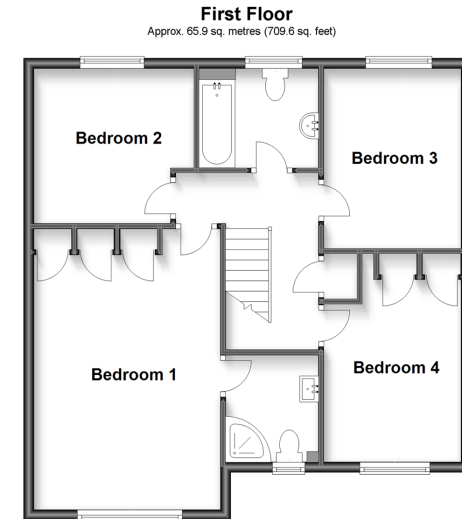
### OUTSIDE

Driveway

Garage 1: 17'9 x 8'9 (5.41m x 2.67m)

Garage 2: 17'9 x 8'9 (5.41m x 2.67m)

Front and Rear Gardens



**Call Headcorn - 01622 890435 ■ [wardsof Kent.co.uk](http://wardsof Kent.co.uk)**

- Legal advice should be taken to verify fixtures/fittings, planning, alterations and/or lease details
- Appliances & services are untested, dimensions are approximate and floor plans are not to scale
- Through a Homewise Home For Life Plan people aged 60+ can secure this property for up to 59% less, by purchasing a Lifetime Lease.



12717676/20230418/DB/TB