



Price
£500,000

Freehold

3x  2x  2x 

**Plough Wents Road,
Chart Sutton, Maidstone,
Kent, ME17**

OVER 60?

Secure this property
for up to **59% less!**

Wards
Helping you move forwards



Main features

- **Deceptively large with a spacious interior**
- **Large driveway with ample parking**
- **Three double bedrooms**
- **Conveniently located within short distance of mainline train station**
- **Large annexe suitable for guest accommodation or home office**

Accommodation

GROUND FLOOR

Entrance Hall
Lounge: 17'2 x 12'4 (5.24m x 3.76m)
Dining/Family Area: 19'0 x 14'3 (5.80m x 4.35m)
Kitchen: 14'1 x 9'9 (4.30m x 2.97m)
Utility Room: 16'0 x 10'5 (4.88m x 3.18m)

FIRST FLOOR

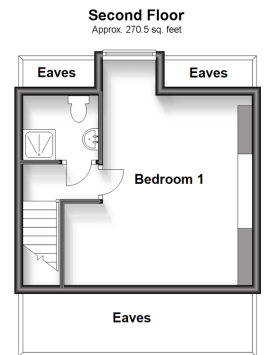
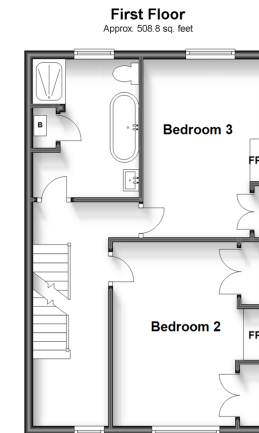
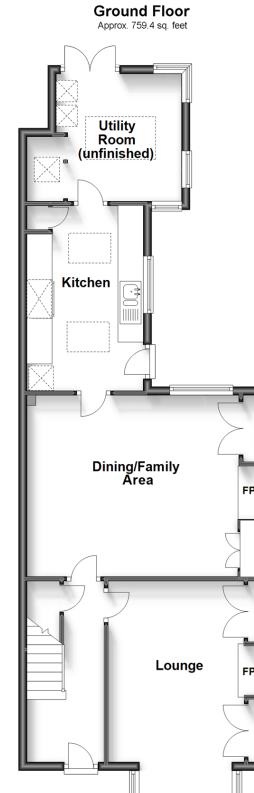
Landing
Bedroom 2: 14'9 x 12'5 (4.50m x 3.79m)
Bedroom 3: 15'4 x 10'4 (4.68m x 3.15m)
Bathroom

SECOND FLOOR

Second Landing
Bedroom 1: 14'9 x 12'5 (4.50m x 3.79m)
En suite Shower Room: 6'3 x 5'4 (1.91m x 1.63m)

OUTSIDE

Front and Rear Gardens
Driveway
Annex
Summer House



Call Headcorn - 01622 890435 ■ wardsof Kent.co.uk

■ Legal advice should be taken to verify fixtures/fittings, planning, alterations and/or lease details
■ Through a Homewise Home For Life Plan people aged 60+ can secure this property for up to 59% less, by purchasing a Lifetime Lease.

■ Appliances & services are untested, dimensions are approximate and floor plans are not to scale