



Video Tour available

**Price**

**£195,000**

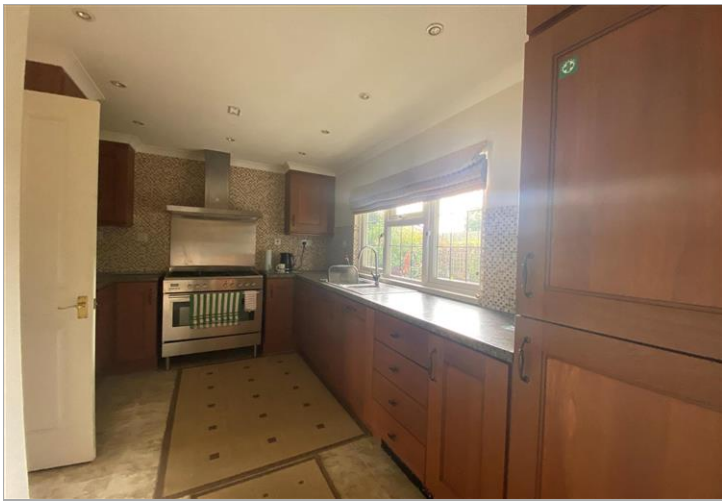
**Leasehold**

2x  2x  2x 

The Green, Woodlands Park, Biddenden,  
Ashford, Kent, TN27

*Wards*  
Helping you move forwards





## Main features

- Park home exclusively for the over 50's
- Beautiful private rear garden
- Useful office space
- En-Suite Shower Room
- Short distance to Headcorn village



## Accommodation

### GROUND FLOOR

**Kitchen:** 13'0 x 9'3 (3.97m x 2.82m)

**Utility Room:** 6'4 x 6'3 (1.93m x 1.91m)

**Dining Room:** 10'0 x 8'5 (3.05m x 2.57m)

**Lounge:** 20'7 x 12'0 (6.28m x 3.66m)

**Office:** 7'7 x 4'8 (2.31m x 1.42m)

**Bedroom 1:** 17'3 x 9'2 (5.26m x 2.80m)

**En-Suite**

**Bedroom 2:** 11'5 x 9'4 (3.48m x 2.85m)

**Bathroom**

### OUTSIDE

**Private rear Garden**



**Call Headcorn - 01622 890435 ■ [wardsof Kent.co.uk](http://wardsof Kent.co.uk)**

- If buying to let, the energy rating will need to be improved to at least 'E' rating before you can let the property
- Legal advice should be taken to verify fixtures/fittings, planning, alterations and/or lease details
- Appliances & services are untested, dimensions are approximate and floor plans are not to scale



12719617/20221018/DB/TB