



OVER 60?

Secure this property
for up to **59% less!**

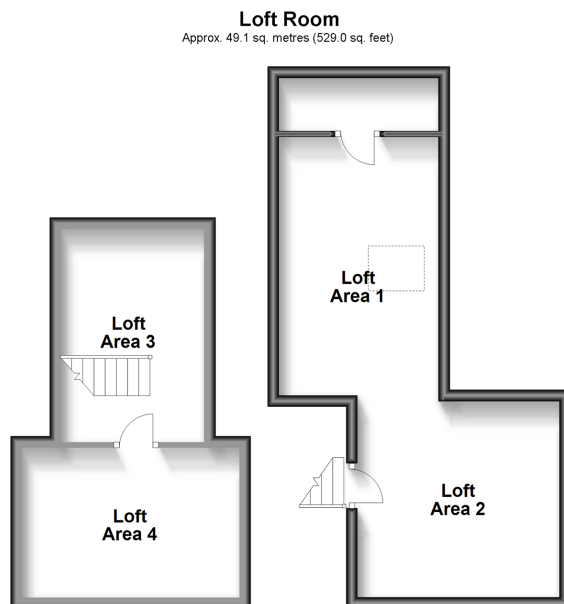
Price
£462,500

Freehold

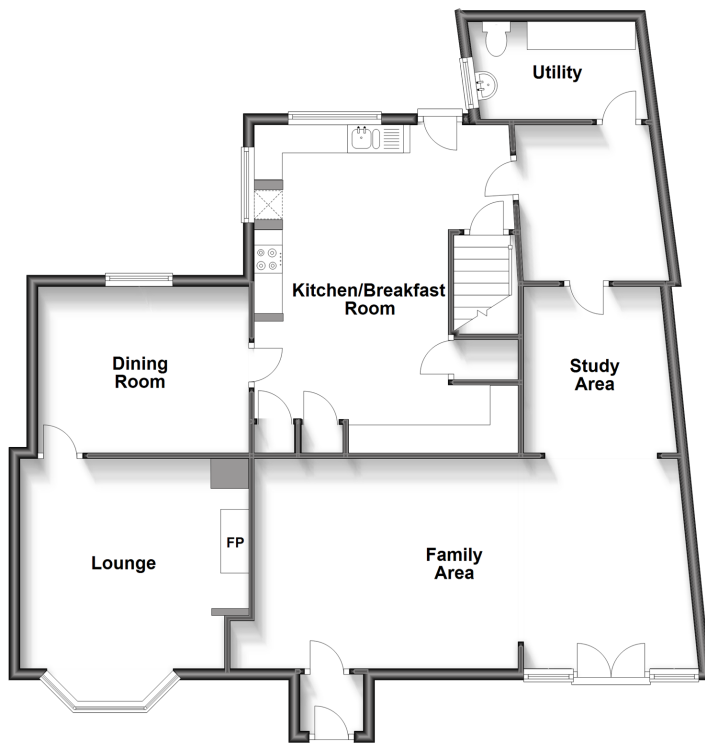
3x  2x  3x 

**The Street, Ulcombe,
Maidstone, Kent, ME17**

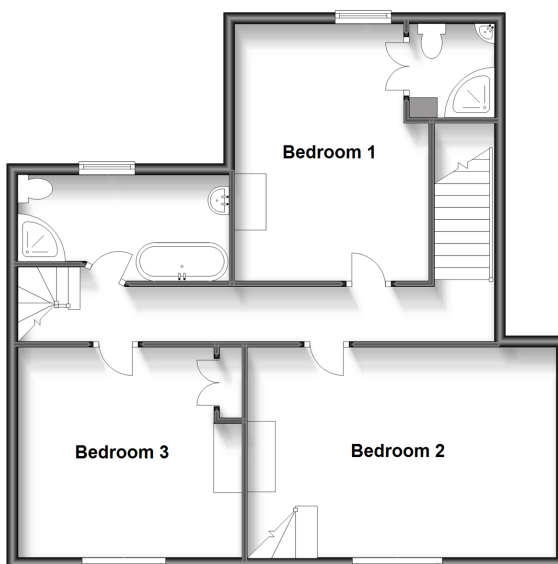
Wards
Helping you move forwards



Split Level Ground Floor
Approx. 107.0 sq. metres (1151.6 sq. feet)



First Floor
Approx. 74.4 sq. metres (800.3 sq. feet)



Accommodation

GROUND FLOOR

Entrance Hall

Lounge: 17'2 x 14'3 (5.24m x 4.35m)

Dining Room: 12'3 x 10'0 (3.74m x 3.05m)

Kitchen/Breakfast Room: 18'5 x 14'6 (5.62m x 4.42m)

Family Area: 26'5 x 12'1 (8.06m x 3.69m)

Study Area: 10'0 x 9'7 (3.05m x 2.92m)

Boot Room: 9'7 x 8'6 (2.92m x 2.59m)

Utility/Cloakroom: 9'0 x 5'7 (2.75m x 1.70m)

FIRST FLOOR

Landing

Bedroom 1: 14'9 x 11'2 (4.50m x 3.41m)

En suite Shower Room

Bedroom 2: 18'0 x 12'2 (5.49m x 3.71m)

Bedroom 3: 13'0 x 13'0 (3.97m x 3.97m)

Bathroom

SECOND FLOOR

Loft Area 1: 19'9 x 10'2 (6.02m x 3.10m)

Loft Area 2: 12'0 x 11'2 (3.66m x 3.41m)

Loft Area 3 Study: 12'5 x 8'2 (3.79m x 2.49m)

Loft Area 4 Gymnasium: 12'6 x 8'9 (3.81m x 2.67m)

OUTSIDE

Front and Rear Gardens

Driveway



Main features

- Large courtyard garden, perfect for outdoor living and gardening
- Short drive to a mainline train station
- Versatile loft rooms, allowing for flexible living space
- Blend of original features and modern amenities
- Spacious family room for relaxation and quality time



Nearest Schools

Primary Schools: Ulcombe C of E Primary 0.0 miles, Kingswood Primary 1.2 miles, Platts Heath Primary 2.0 miles

Secondary Schools: Sutton Valence School 2.2 miles,



Transport Information

Train Stations: Harrietsham 2.6 miles, Headcorn 3.0 miles, Lenham 3.2 miles



Address

The Street, Ulcombe, Maidstone, Kent, ME17



Directions

For directions to this property please contact us.



Wards
Helping you move forwards

Call Headcorn Branch 01622 890435 ■ wardsofkent.co.uk



- If buying to let, the energy rating will need to be improved to at least 'E' rating before you can let the property
- Appliances & services are untested, dimensions are approximate and floor plans are not to scale

- Legal advice should be taken to verify fixtures/fittings, planning, alterations and/or lease details
- Through a Homewise Home For Life Plan people aged 60+ can secure this property for up to 59% less, by purchasing a Lifetime Lease.



12720597/20231026/HC/TB