



Price
£725,000

Freehold

5x  3x  2x 

**Broomfield Road,
Kingswood, Maidstone,
Kent, ME17**

OVER 60?

Secure this property
for up to **59% less!**

Wards
Helping you move forwards



Main features

- Immaculately presented with modern decor throughout
- Large garage to the front
- Integral annexe to the side
- Sitting on a 0.65 acre plot with various outbuildings including a gym
- Close to the woods, perfect for dog walking or a summers walk

Accommodation

GROUND FLOOR

Entrance Hall
 Bedroom 2: 11'1 x 9'0 (3.38m x 2.75m)
 Kitchen/Breakfast Area: 21'6 x 15'6 (6.56m x 4.73m)
 Lounge/Dining Area: 23'5 x 12'9 (7.14m x 3.89m)
 Utility: 13'5 x 7'4 (4.09m x 2.24m)
 Bedroom 1: 21'9 x 11'5 (6.63m x 3.48m)
 En suite Bathroom Room

ANNEXE

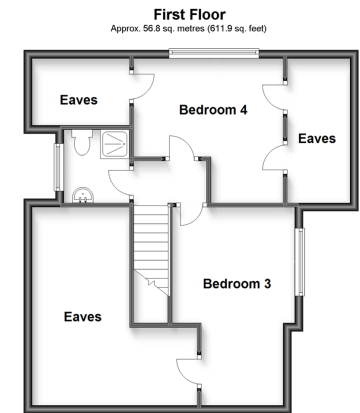
Annexe Bedroom : 12'9 x 12'0 (3.89m x 3.66m)
 Annexe Shower Room
 Annexe Kitchen/Lounge: 15'6 x 13'6 (4.73m x 4.12m)

FIRST FLOOR

Landing
 Bedroom 3: 12'0 x 11'5 (3.66m x 3.48m)
 Bedroom 4: 16'0 x 10'0 (4.88m x 3.05m)
 Shower Room
 Eaves Storage

OUTSIDE

Block Paved Driveway
 Garage : 17'0 x 17'0 (5.19m x 5.19m)
 Large Rear Garden
 Gym: 18'6 x 16'6 (5.64m x 5.03m)
 Summer House
 2 Large Sheds



Call Headcorn - 01622 890435 ■ wardsof Kent.co.uk

■ Legal advice should be taken to verify fixtures/fittings, planning, alterations and/or lease details
 ■ Through a Homewise Home For Life Plan people aged 60+ can secure this property for up to 59% less, by purchasing a Lifetime Lease.

■ Appliances & services are untested, dimensions are approximate and floor plans are not to scale



12720815/20240312/HS1/TB