



Price
£170,000

2x  1x  1x 

**Willow Way, Woodlands
Park, Biddenden,
Ashford, Kent, TN27**

OVER 60?

Secure this property
for up to **59% less!**

Wards
Helping you move forwards



Main features

- **Neatly presented with neutral decor through**
- **Driveway for multiple cars**
- **Large rear garden**
- **Large open plan lounge/diner**
- **Walking distance to the local shop and bus stop**

Accommodation

GROUND FLOOR

Entrance Hall

Lounge: 19'3 x 10'7 (5.87m x 3.23m)

Dining Area: 9'9 x 7'8 (2.97m x 2.34m)

Kitchen: 10'9 x 9'6 (3.28m x 2.90m)

Bedroom 1: 11'4 x 9'2 (3.46m x 2.80m)

En-suite Cloakroom

Bedroom 2: 9'8 x 9'5 (2.95m x 2.87m)

Shower Room

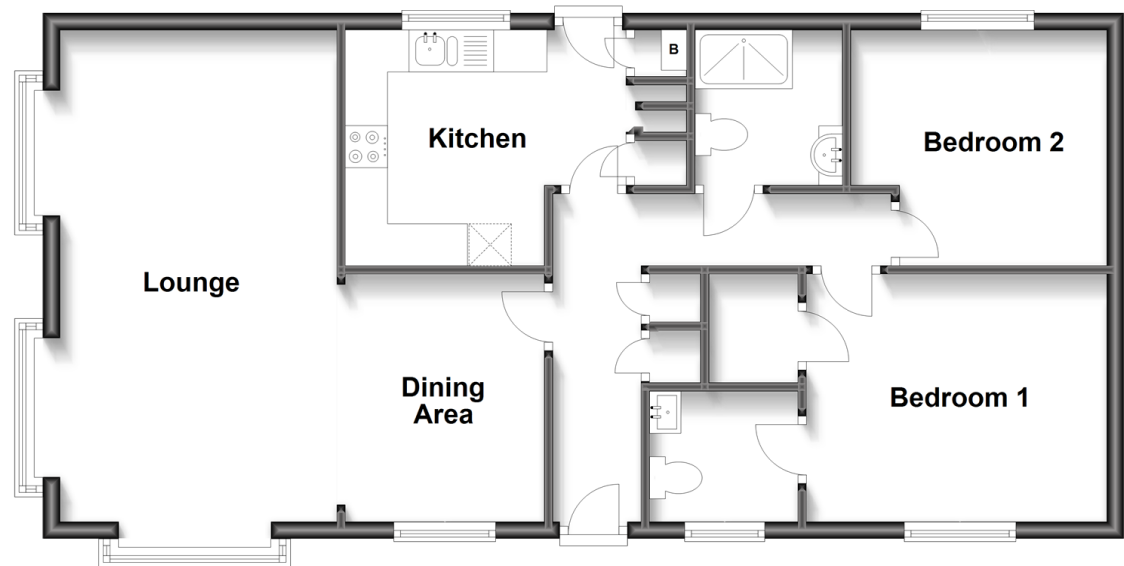
OUTSIDE

Front and Rear Gardens

Driveway

Ground Floor

Approx. 73.1 sq. metres (787.3 sq. feet)



Call Headcorn - 01622 890435 ■ wardsof Kent.co.uk

- If buying to let, the energy rating will need to be improved to at least 'E' rating before you can let the property
- Appliances & services are untested, dimensions are approximate and floor plans are not to scale

- Legal advice should be taken to verify fixtures/fittings, planning, alterations and/or lease details
- Through a Homewise Home For Life Plan people aged 60+ can secure this property for up to 59% less, by purchasing a Lifetime Lease.



12720940/20231009/HC/TB