



Guide Price
£650,000
Freehold

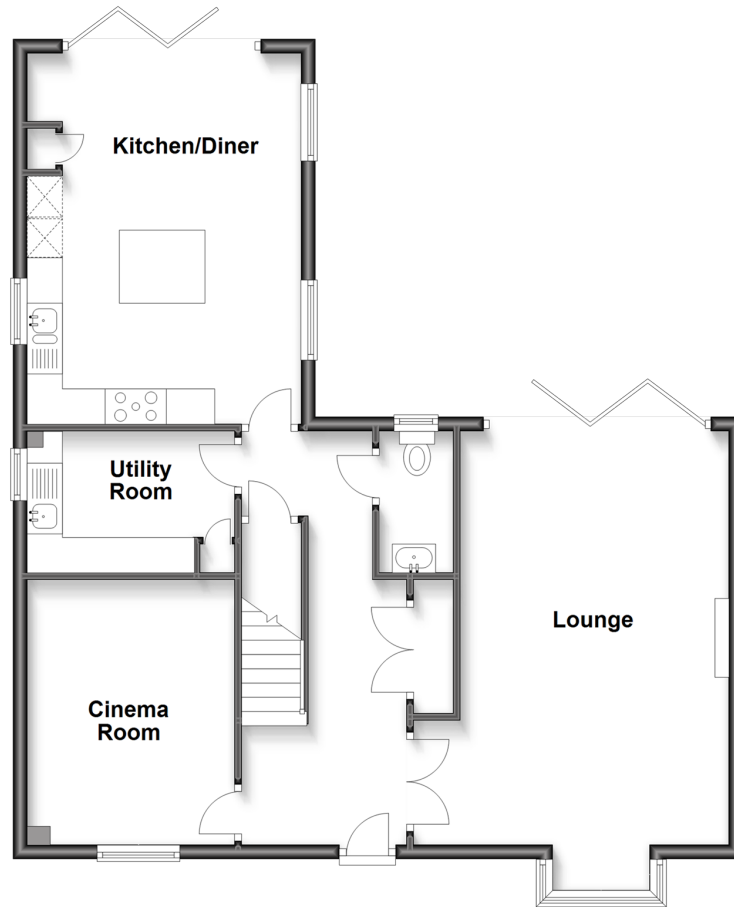
4x  3x  2x 

**Greensand Meadow, Sutton Valence,
Maidstone, Kent, ME17**

Wards
Helping you move forwards

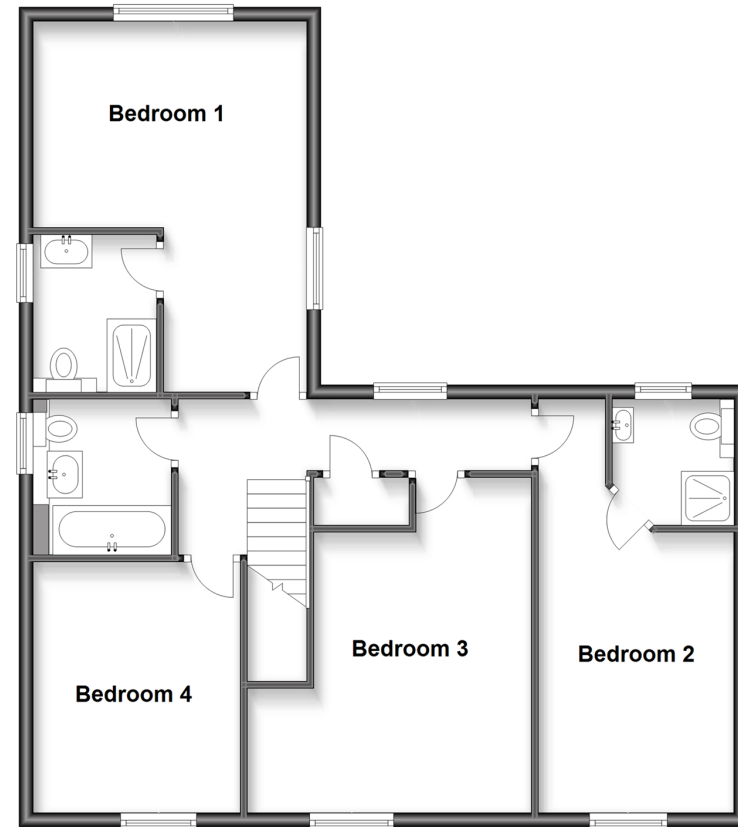
Ground Floor

Approx. 81.3 sq. metres (875.1 sq. feet)



First Floor

Approx. 80.6 sq. metres (867.5 sq. feet)



Accommodation

GROUND FLOOR

Entrance Hall

Lounge: 19'2 x 12'6 (5.85m x 3.81m)

Kitchen/Diner: 17'2 x 13'3 (5.24m x 4.04m)

Cinema Room: 12'11 x 9'1 (3.94m x 2.77m)

Cloakroom

Utility

FIRST FLOOR

Landing

Bedroom 1: 17'3 x 13'4 (5.26m x 4.07m)

En suite Shower Room

Family Bathroom: 7'2 x 5'8 (2.19m x 1.73m)

Bedroom 2: 19'2 x 9'4 (5.85m x 2.85m)

En-suite Shower Room

Bedroom 3: 15'7 x 13'2 (4.75m x 4.02m)

Bedroom 4: 11'8 x 10'0 (3.56m x 3.05m)

OUTSIDE

Front and Rear Garden

Double Garage

Storage Facility



Main features

- Immaculately presented with modern decor throughout
- Ground floor under floor heating
- Double detached garage
- Open plan integrated kitchen with quartz worktop
- Bifold doors leading out to a stunning landscaped garden



Nearest Schools

Primary Schools: Sutton Valence Primary 0.6 miles, Ulcombe C of E Primary 2.2 miles, Kingswood Primary 2.2 miles

Secondary Schools: Sutton Valence School 0.5 miles,



Transport Information

Train Stations: Headcorn 3.0 miles, Staplehurst 3.0 miles, Hollingbourne 4.1 miles



Address

Greensand Meadow, Sutton Valence, Maidstone, Kent, ME17



Directions

For directions to this property please contact us.





Wards
Helping you move forwards

Call Headcorn Branch 01622 890435 ■ wardsofkent.co.uk



■ Legal advice should be taken to verify fixtures/fittings, planning, alterations and/or lease details ■ Appliances & services are untested, dimensions are approximate and floor plans are not to scale



12721328/20240120/HS1/TB