



Price
£750,000

Freehold

5x  3x  2x 

**Greensand Meadow,
Sutton Valence,
Maidstone, Kent, ME17**

OVER 60?

Secure this property
for up to **59% less!**

Wards
Helping you move forwards



Main features

- Immaculately presented with neutral decor throughout
- Underfloor heating downstairs
- Stunning landscaped garden
- Incredible main bedroom with ensuite and dressing area
- Set in an executive development
Nearby to local private and comprehensive schools

Accommodation

GROUND FLOOR

Entrance Hall
Lounge: 23'4 x 11'5 (7.12m x 3.48m)
Kitchen/Diner: 25'4 x 11'4 (7.73m x 3.46m)
Cloakroom
Utility: 6'2 x 4'9 (1.88m x 1.45m)

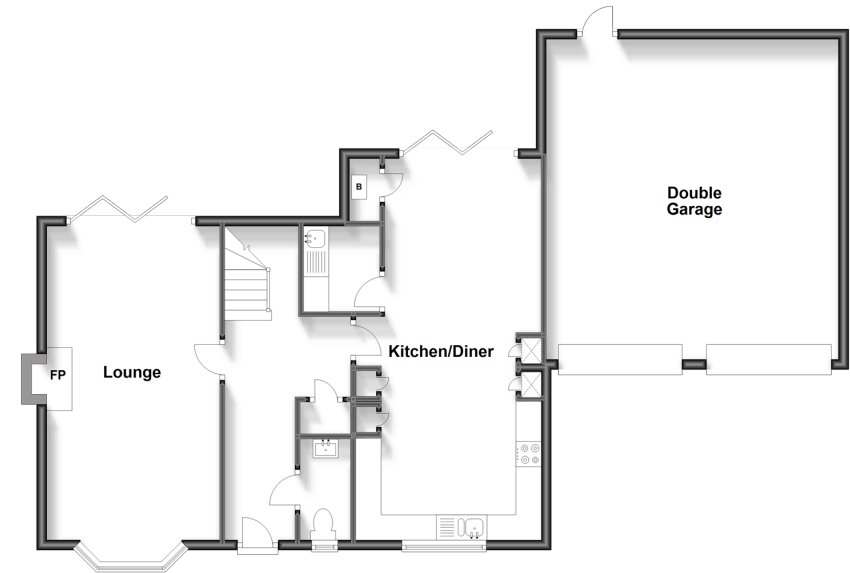
FIRST FLOOR

Landing
Bedroom 1: 21'4 x 20'4 (6.51m x 6.20m)
Dressing area
En-suite Shower Room
Bedroom 2: 14'9 x 14'1 (4.50m x 4.30m)
En-suite
Bedroom 3: 11'6 x 10'0 (3.51m x 3.05m)
Bedroom 4: 11'4 x 9'7 (3.46m x 2.92m)
Bathroom
Bedroom 5/Office: 11'1 x 7'4 (3.38m x 2.24m)

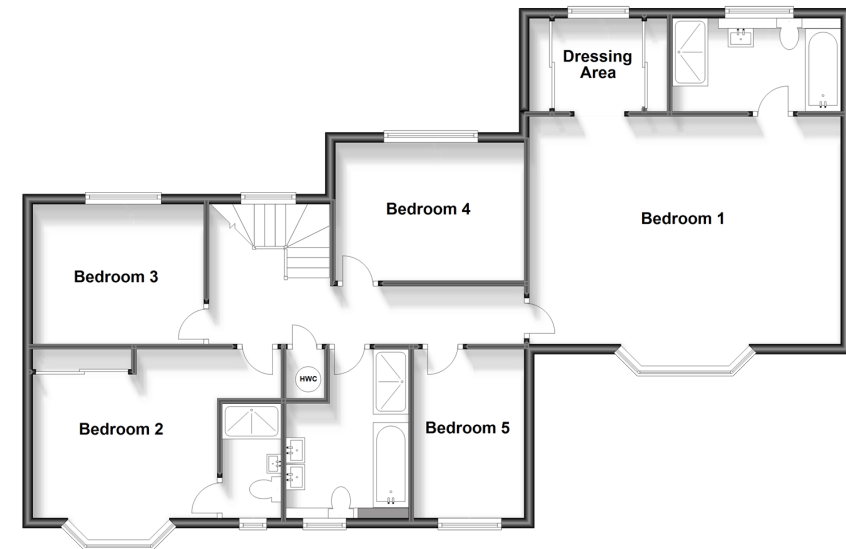
OUTSIDE

Front and Rear Gardens
Driveway and Double Garage

Ground Floor
Approx. 102.9 sq. metres (1107.6 sq. feet)



First Floor
Approx. 105.4 sq. metres (1134.8 sq. feet)



Call Headcorn - 01622 890435 ■ wardsof Kent.co.uk

- Legal advice should be taken to verify fixtures/fittings, planning, alterations and/or lease details
- Appliances & services are untested, dimensions are approximate and floor plans are not to scale
- Through a Homewise Home For Life Plan people aged 60+ can secure this property for up to 59% less, by purchasing a Lifetime Lease.



12721373/20231031/TB/TB