



Guide Price
£240,000

2x  2x  2x 

**Cedar Lane, Woodlands
Park, Biddenden,
Ashford, Kent, TN27**

Wards
Helping you move forwards



Main features

- Fully residential park home
- Driveway for three cars
- Spacious throughout with room to entertain family and friends
- Stunning wrap around garden with beautiful countryside views
- Outside electrics with point

Accommodation

GROUND FLOOR

Entrance

Kitchen/Dining Area: 18'0 x 16'0 (5.49m x 4.88m)

Lounge: 20'2 x 11'8 (6.15m x 3.56m)

Conservatory: 20'0 x 9'6 (6.10m x 2.90m)

Family Bathroom

Bedroom 1: 10'0 x 9'5 (3.05m x 2.87m)

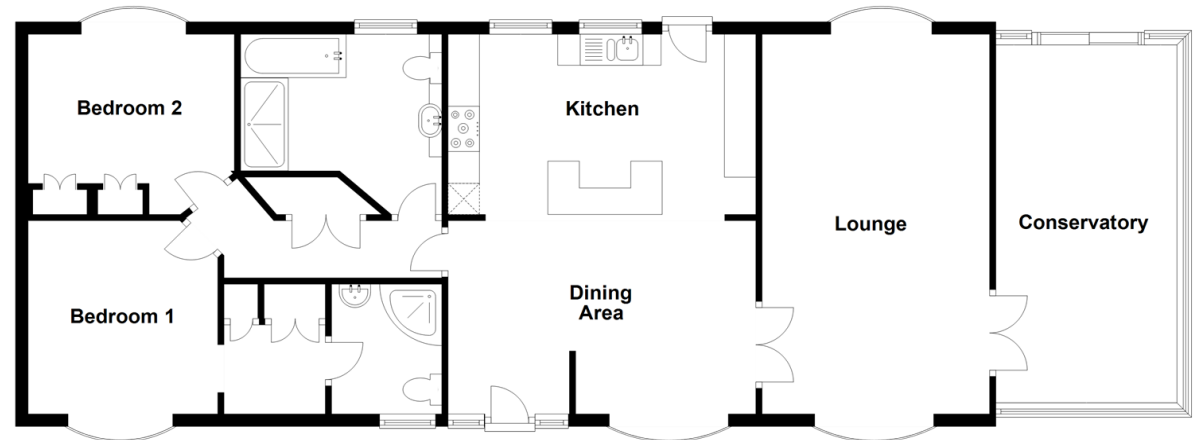
Dressing Room: 5'2 x 4'6 (1.58m x 1.37m)

En-suite Shower Room

Bedroom 2: 10'8 x 9'5 (3.25m x 2.87m)

Ground Floor

Approx. 112.1 sq. metres (1206.5 sq. feet)



Call Headcorn - 01622 890435 ■ wardsof Kent.co.uk

■ If buying to let, the energy rating will need to be improved to at least 'E' rating before you can let the property

■ Appliances & services are untested, dimensions are approximate and floor plans are not to scale

■ Legal advice should be taken to verify fixtures/fittings, planning, alterations and/or lease details



12721479/20231122/HS1/TB