



Price
£625,000

Freehold

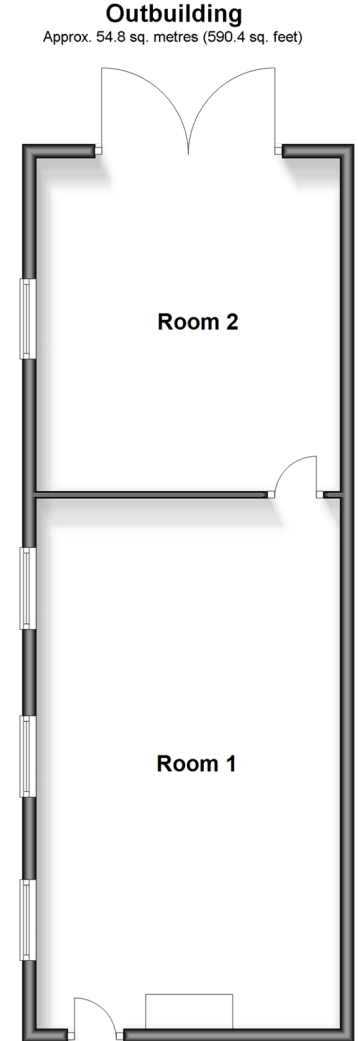
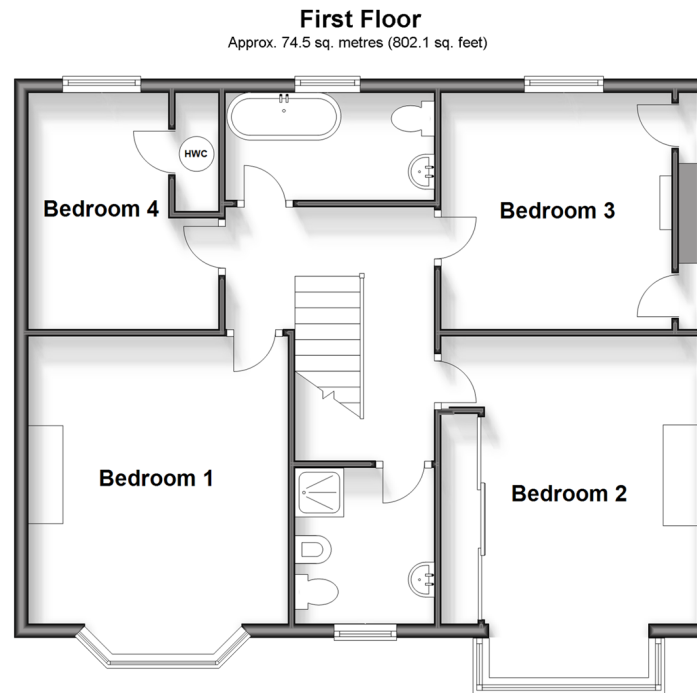
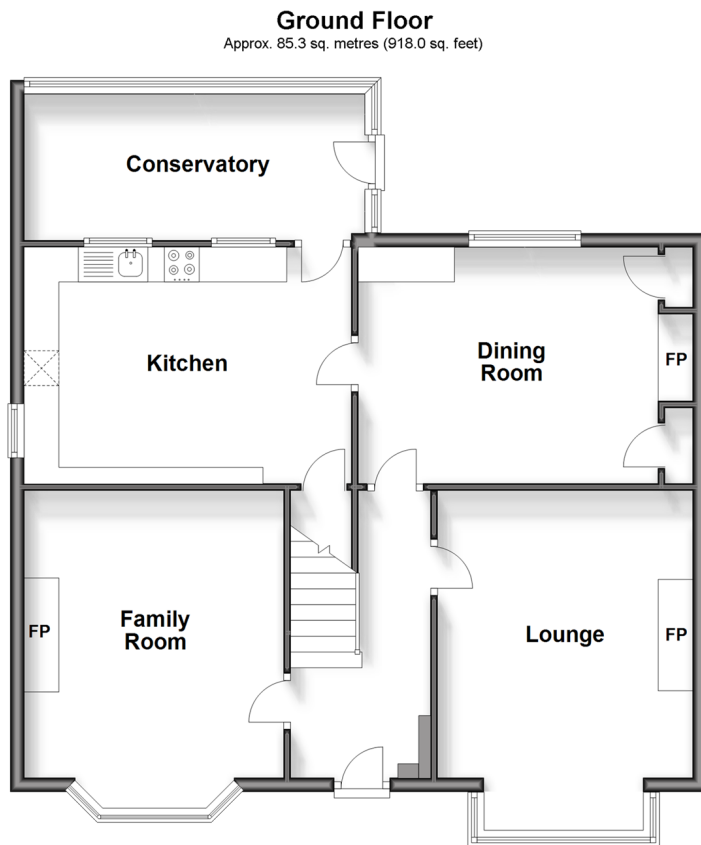
4x  2x  3x 

**Rushden House, Station
Road, Headcorn,
Ashford, Kent, TN27**

OVER 60?

Secure this property
for up to **59% less!**

Wards
Helping you move forwards



Accommodation

GROUND FLOOR

Entrance Hall

Family Room: 16'1 x 12'1 (4.91m x 3.69m)

Lounge: 16'1 x 12'1 (4.91m x 3.69m)

Dining Room: 14'2 x 11'0 (4.32m x 3.36m)

Kitchen: 15'4 x 11'0 (4.68m x 3.36m)

Conservatory: 17'2 x 7'5 (5.24m x 2.26m)

FIRST FLOOR

Landing

Bedroom 1: 13'5 x 12'1 (4.09m x 3.69m)

Bedroom 2: 16'0 x 12'1 (4.88m x 3.69m)

Bedroom 3: 11'1 x 10'9 (3.38m x 3.28m)

Bedroom 4: 11'5 x 8'8 (3.48m x 2.64m)

Bathroom

Shower Room

OUTSIDE

Front and Rear Gardens

Driveway and Garage

Storage/Out Building



Main features

- Stunning Edwardian detached house
- A wealth of period features throughout including original fire places
- Large outbuilding perfect for conversion (subject to planning)
- Driveway for 2 vehicles
- Garage to the rear via private road



Nearest Schools

Primary Schools: Headcorn Primary 0.4 miles, Frittenden C of E Primary 3.3 miles, Ulcombe C of E Primary 3.7 miles

Secondary Schools: Sutton Valence School 4.0 miles,



Transport Information

Train Stations: Headcorn 0.0 miles, Staplehurst 4.8 miles, Lenham 5.8 miles



Address

Rushden House, Station Road, Headcorn, Ashford, Kent, TN27



Directions

For directions to this property please contact us.



Call Headcorn Branch 01622 890435 ■ wardsofkent.co.uk



- Legal advice should be taken to verify fixtures/fittings, planning, alterations and/or lease details
- Appliances & services are untested, dimensions are approximate and floor plans are not to scale
- Through a Homewise Home For Life Plan people aged 60+ can secure this property for up to 59% less, by purchasing a Lifetime Lease.



12721480/20240514/JW/HS1