



OVER 60?

Secure this property
for up to **59% less!**

Price

£450,000

Freehold

4x  1x  1x 

**Laurel Grove,
Kingswood, Maidstone,
Kent, ME17**

Wards
Helping you move forwards



Main features

- Beautifully presented with neutral decor throughout
- Stunning open plan family dining area
- Large driveway and garage
- Under floor heating downstairs
- Pretty Juliet balcony
- Incredible sunny garden with room to entertain

Accommodation

GROUND FLOOR

Entrance Hall

Cloak Room

Family/ Dining Area: 22'7 x 22'6 (6.89m x 6.86m)

Kitchen: 11'8 x 9'5 (3.56m x 2.87m)

Utility: 10'1 x 7'4 (3.08m x 2.24m)

FIRST FLOOR

Landing

Bedroom 1: 12'5 x 11'7 (3.79m x 3.53m)

Bedroom 2: 10'4 x 6'7 (3.15m x 2.01m)

Bedroom 3: 12'4 x 9'9 (3.76m x 2.97m)

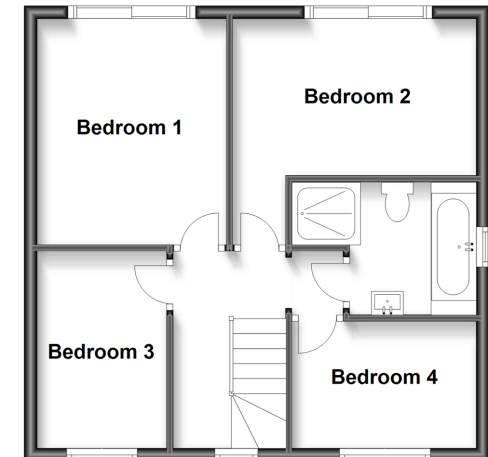
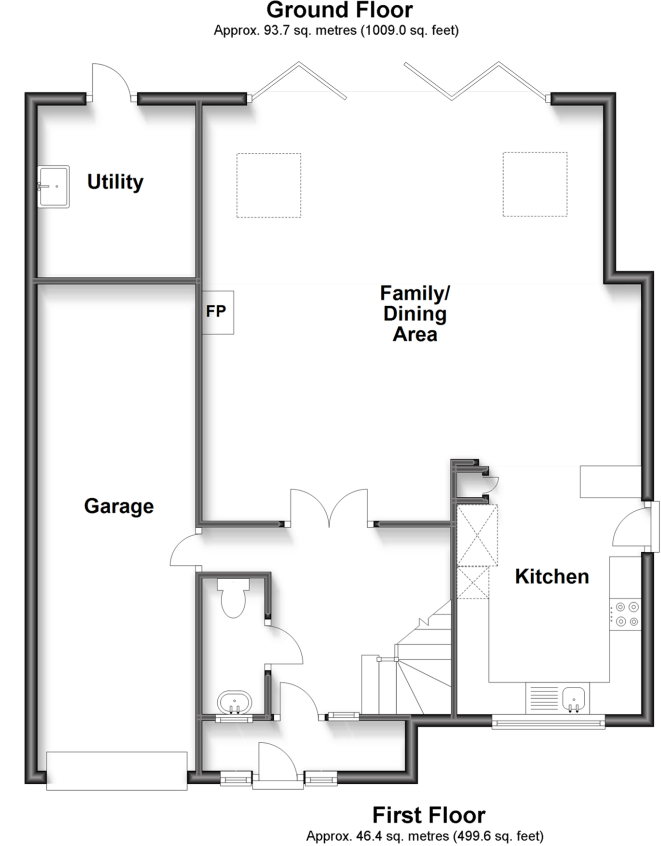
Bedroom 4: 9'9 x 7'3 (2.97m x 2.21m)

Bathroom

OUTSIDE

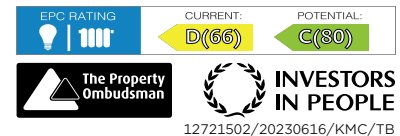
Garage and Driveway

Front and Rear Garden



Call Headcorn - 01622 890435 ■ wardsofkent.co.uk

- Legal advice should be taken to verify fixtures/fittings, planning, alterations and/or lease details
- Appliances & services are untested, dimensions are approximate and floor plans are not to scale
- Through a Homewise Home For Life Plan people aged 60+ can secure this property for up to 59% less, by purchasing a Lifetime Lease.



12721502/20230616/KMC/TB