



Price

£575,000

Freehold

4x  2x  2x 

**Marsham Crescent,
Chart Sutton, Maidstone,
Kent, ME17**

OVER 60?

Secure this property
for up to **59% less!**

Wards
Helping you move forwards



Main features

- Immaculately presented
- Spacious throughout with room to entertain
- Set on a corner plot in a quiet village location overlooking fields
- Nearby to local schools, and amenities
- En-suite to main bedroom

Accommodation

GROUND FLOOR

Entrance Hall
 Lounge/Diner: 24'4 x 12'8 (7.42m x 3.86m)
 Kitchen: 12'9 x 10'2 (3.89m x 3.10m)
 Family Room: 14'6 x 13'8 (4.42m x 4.17m)
 Cloakroom
 Conservatory: 13'0 x 11'4 (3.97m x 3.46m)

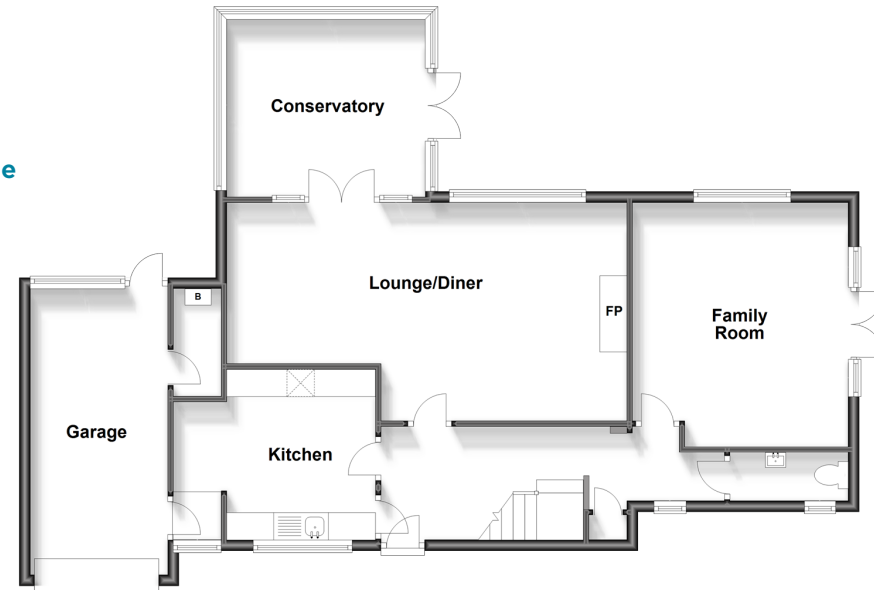
FIRST FLOOR

Landing
 Bedroom 1: 13'7 x 12'5 (4.14m x 3.79m)
 En suite Shower Room
 Bedroom 2: 13'1 x 10'9 (3.99m x 3.28m)
 Bedroom 3: 12'9 x 10'4 (3.89m x 3.15m)
 Bedroom 4: 9'3 x 8'2 (2.82m x 2.49m)
 Bathroom

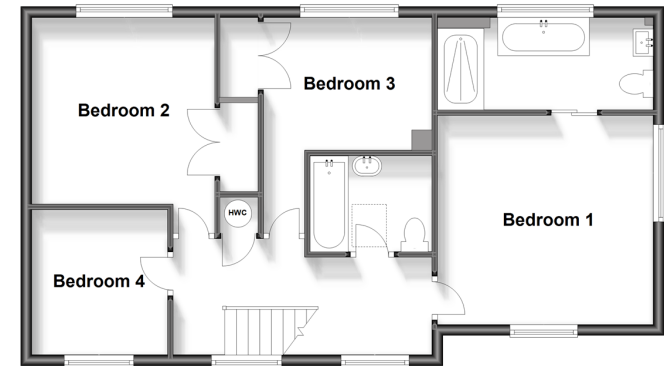
OUTSIDE

Front and Rear Gardens
 Garage and Driveway

Ground Floor
 Approx. 97.9 sq. metres (1053.6 sq. feet)



First Floor
 Approx. 68.1 sq. metres (733.6 sq. feet)



Call Headcorn - 01622 890435 ■ wardsof Kent.co.uk

- Legal advice should be taken to verify fixtures/fittings, planning, alterations and/or lease details
- Appliances & services are untested, dimensions are approximate and floor plans are not to scale
- Through a Homewise Home For Life Plan people aged 60+ can secure this property for up to 59% less, by purchasing a Lifetime Lease.



12721558/20231018/DB/TB