



Price

£160,000

Leasehold

1x  1x  1x 

**"Apartment", Kings
House, Headcorn,
Ashford, Kent, TN27**

OVER 60?

Secure this property
for up to **59% less!**

Wards
Helping you move forwards



Main features

- Immaculately presented with neutral decor throughout
- Renovated in 2016
- Perfect for first time buyers and investors alike
- Walking distance to the village of Headcorn and its train station
- Open plan kitchen/lounge /diner

Accommodation

TOP FLOOR

Entrance Hall

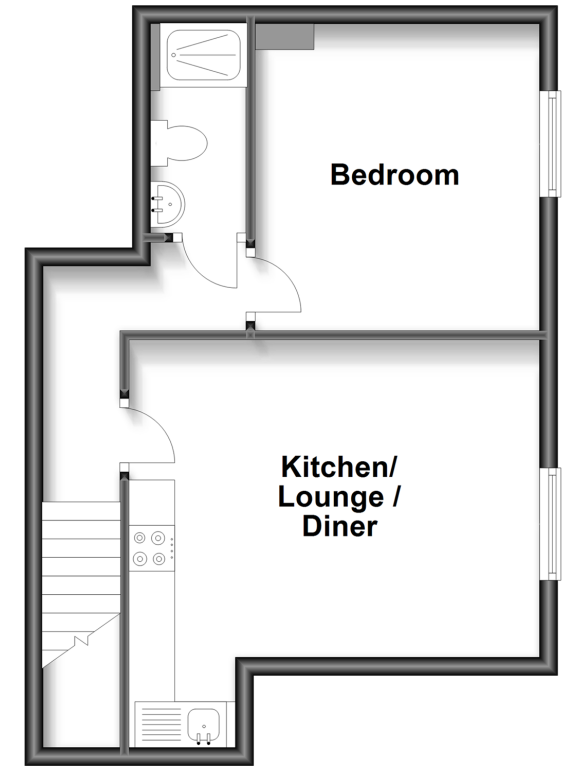
Lounge/Kitchen/Diner: 14'8 x 14'6
(4.47m x 4.42m)

Bedroom 1: 10'9 x 10'2 (3.28m x 3.10m)

Shower Room

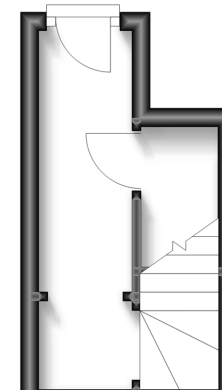
First Floor

Approx. 25.4 sq. metres (273.6 sq. feet)



Ground Floor

Approx. 6.7 sq. metres (71.9 sq. feet)



Call Headcorn - 01622 890435 ■ wardsofkent.co.uk

- If buying to let, the energy rating will need to be improved to at least 'E' rating before you can let the property
- Legal advice should be taken to verify fixtures/fittings, planning, alterations and/or lease details
- Appliances & services are untested, dimensions are approximate and floor plans are not to scale
- Through a Homewise Home For Life Plan people aged 60+ can secure this property for up to 59% less, by purchasing a Lifetime Lease.



12721584/20240210/HC/TB