



Price

£210,000

Leasehold

2x  2x  1x 

**Blossom Close,
Woodlands Park,
Biddenden, Ashford,
Kent, TN27**

Wards
Helping you move forwards



Main features

- Beautifully presented and spacious park home
- Garden to the rear
- Off street parking for 2 cars
- Situated in the popular Woodlands Park
- Great access to the road links and amenities that surround

Accommodation

GROUND FLOOR

Entrance Hall

Lounge /Diner: 19'3 x 17'5 (5.87m x 5.31m)

Kitchen: 9'5 x 7'7 (2.87m x 2.31m)

Pantry Area: 7'1 x 5'1 (2.16m x 1.55m)

Hallway

Bathroom

Bathroom 1: 14'0 x 9'9 (4.27m x 2.97m)

En-suite Shower Room

Walk in Wardrobe

Study: 6'0 x 4'8 (1.83m x 1.42m)

Bedroom 2: 10'0 x 9'4 (3.05m x 2.85m)

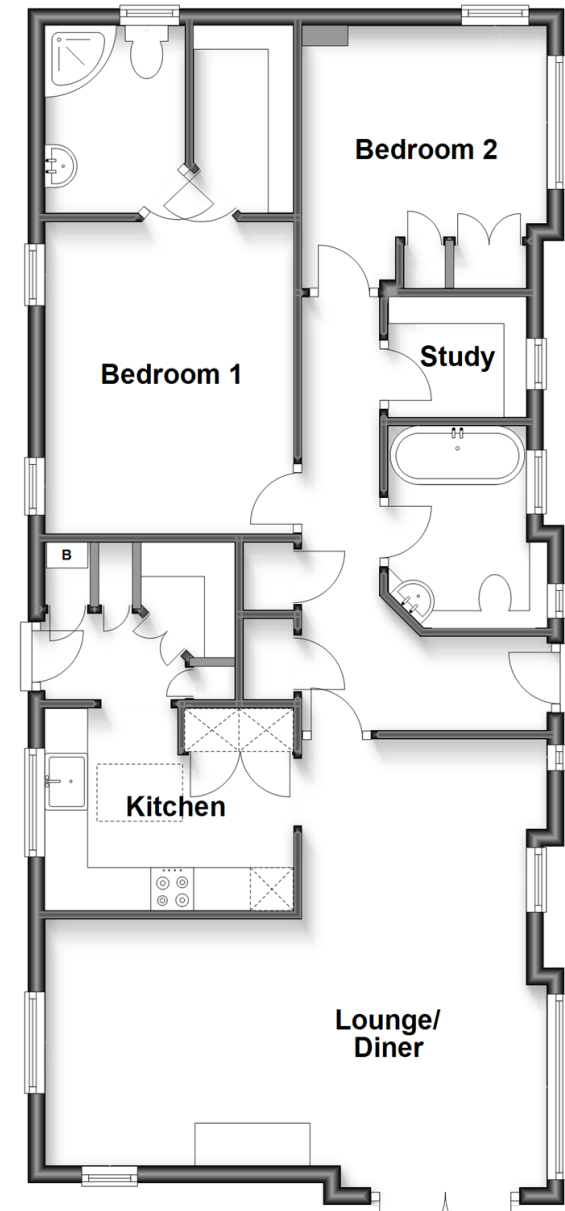
OUTSIDE

Front and Rear Gardens

Driveway

Ground Floor

Approx. 77.1 sq. metres (829.7 sq. feet)



Call Headcorn - 01622 890435 ■ wardsofKent.co.uk

- If buying to let, the energy rating will need to be improved to at least 'E' rating before you can let the property
- Legal advice should be taken to verify fixtures/fittings, planning, alterations and/or lease details
- Appliances & services are untested, dimensions are approximate and floor plans are not to scale



12721595/20230124/JG/TB