



**Price**  
**£425,000**

**Freehold**

4x  2x  1x 

**Gardenia Road, Langley,  
Maidstone, Kent, ME17**

**OVER 60?**

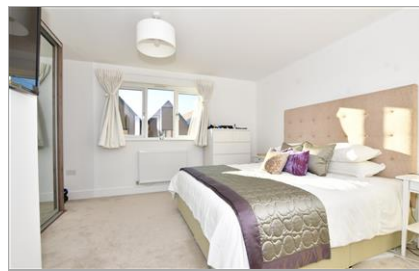
Secure this property  
for up to **59% less!**



**Video Tour available**

**Wards**  
Helping you move forwards





## Main features

- **Stunning condition "nearly new" build on desirable modern development**
- **Detached garage with light & power and storage above**
- **Double bedrooms throughout plus ensuite to main bedroom**
- **Easy access to supermarket, shops and school**
- **On the fringes of Bearsted and Maidstone**

## Accommodation

### GROUND FLOOR

Hallway: 12'6 x 7'4 (3.81m x 2.24m)  
Cloakroom: 7'11 x 3'2 (2.41m x 0.97m)  
Kitchen: 18'11 x 6'7 (5.77m x 2.01m)  
Dining Area: 17'2 x 13'10 (5.24m x 4.22m)  
Lounge: 13'10 x 6'10 (4.22m x 2.08m)

### FIRST FLOOR

Landing  
Bedroom 2: 13'10 x 9'8 (4.22m x 2.95m)  
Bedroom 3: 13'10 x 8'4 (4.22m x 2.54m)  
Bathroom with Shower: 10'1 x 6'9 (3.08m x 2.06m)

### SECOND FLOOR

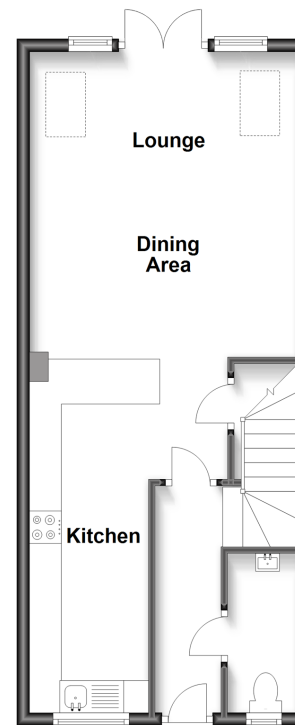
Landing  
Bedroom 1: 13'9 x 12'3 (4.19m x 3.74m)  
En-suite Shower Room: 7'2 x 5'5 (2.19m x 1.65m)  
Bedroom 4: 13'10 x 8'0 (4.22m x 2.44m)

### OUTSIDE

Rear Garden  
Garage  
Allocated Parking  
Visitor Parking Area

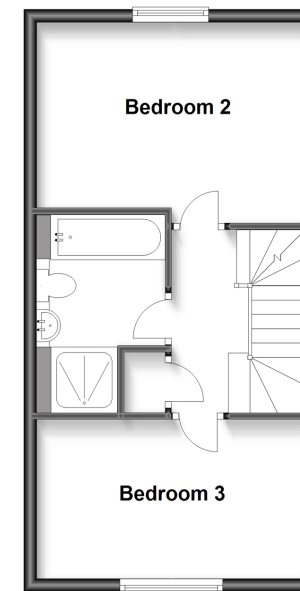
### Ground Floor

Approx. 43.0 sq. metres (462.4 sq. feet)



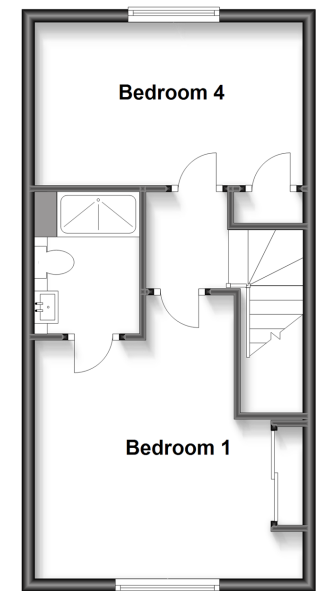
### First Floor

Approx. 36.2 sq. metres (389.3 sq. feet)



### Second Floor

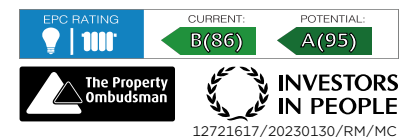
Approx. 36.2 sq. metres (389.3 sq. feet)



**Call Bearsted - 01622 730955 ■ [wardsofkent.co.uk](http://wardsofkent.co.uk)**

■ Legal advice should be taken to verify fixtures/fittings, planning, alterations and/or lease details  
■ Through a Homewise Home For Life Plan people aged 60+ can secure this property for up to 59% less, by purchasing a Lifetime Lease.

■ Appliances & services are untested, dimensions are approximate and floor plans are not to scale



12721617/20230130/RM/MC