



**Price**

**£1,425,000**

**Freehold**

5x  3x  4x 

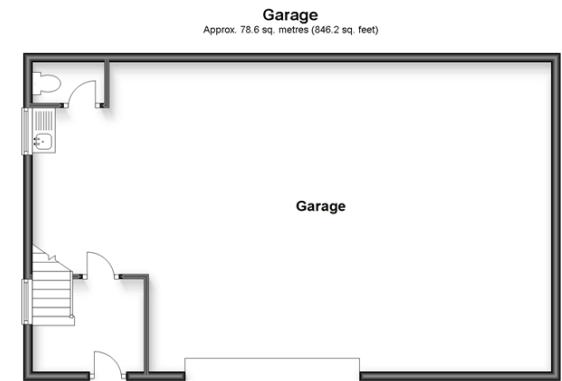
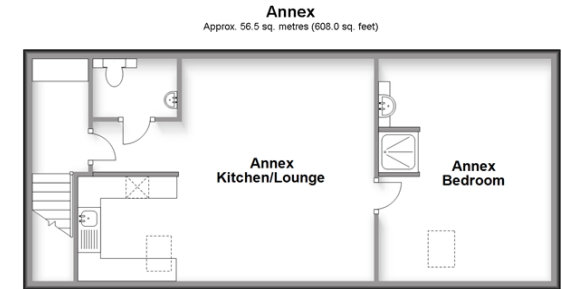
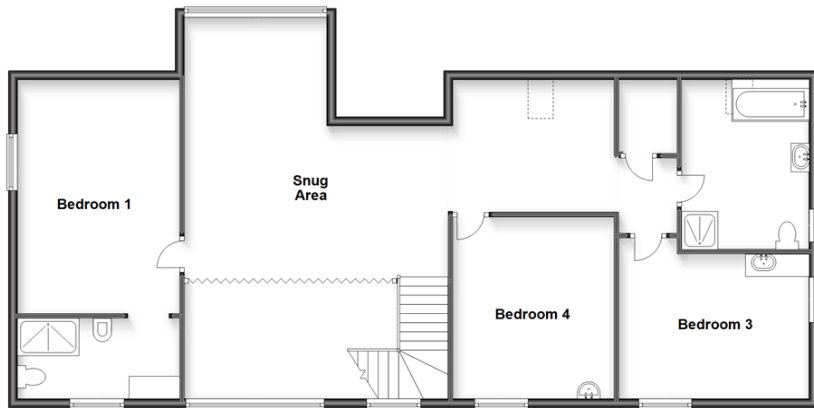
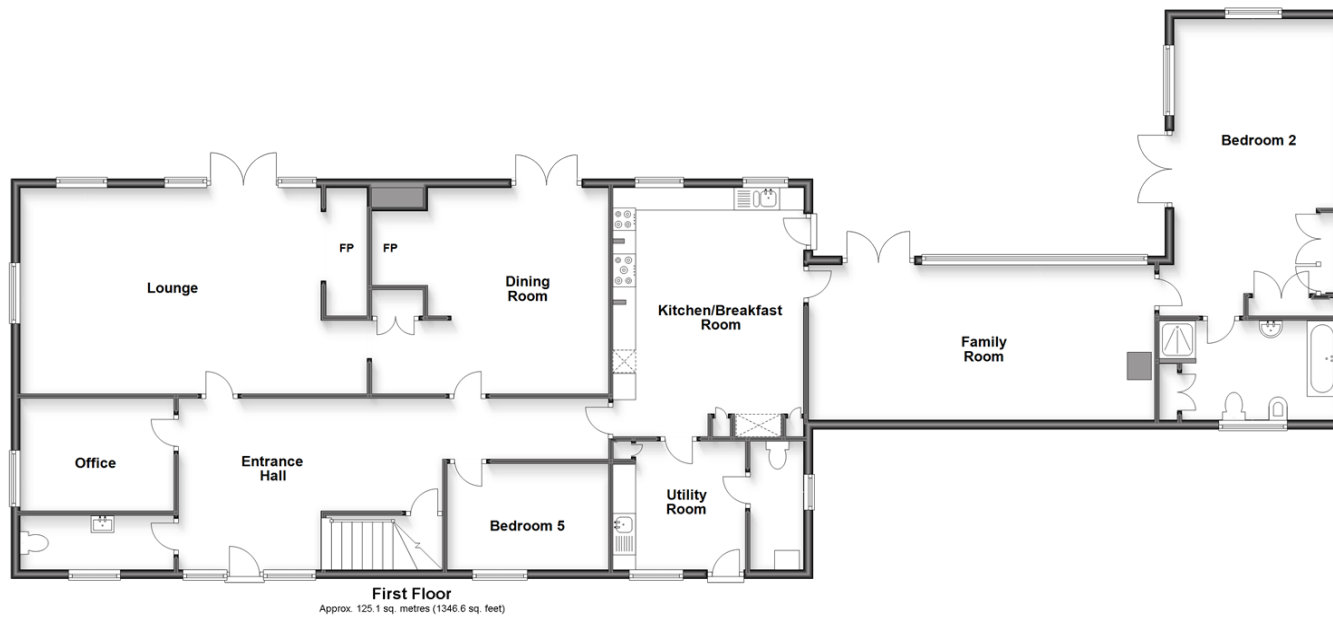
**Morry Lane, East Sutton,  
Maidstone, Kent, ME17**



**Video Tour available**

***Wards***  
Helping you move forwards





## Accommodation

### GROUND FLOOR

Entrance Hall: 19'0 x 13'5 (5.80m x 4.09m)  
Lounge: 22'7 x 15'6 (6.89m x 4.73m)  
Office: 11'1 x 8'2 (3.38m x 2.49m)  
Cloakroom  
Dining Room: 20'4 x 15'0 (6.20m x 4.58m)  
Kitchen/Breakfast Room: 18'4 x 14'0 (5.59m x 4.27m)  
Toilet  
Utility: 9'7 x 9'5 (2.92m x 2.87m)  
Bedroom 5: 11'3 x 7'5 (3.43m x 2.26m)  
Family Room: 25'0 x 11'5 (7.63m x 3.48m)  
Bedroom 2: 11'9 x 8'4 (3.58m x 2.54m)  
En-suite Bathroom

### FIRST FLOOR

Snug Area: 20'3 x 19'3 (6.18m x 5.87m)  
Bedroom 1: 17'4 x 12'0 (5.29m x 3.66m)  
En-suite Shower  
Bedroom 3: 13'4 x 11'5 (4.07m x 3.48m)  
Bedroom 4: 14'1 x 11'8 (4.30m x 3.56m)

### ANNEXE

Annexe Kitchen/Lounge: 20'3 x 16'2 (6.18m x 4.93m)  
Annexe Cloakroom  
Annexe Bedroom: 16'3 x 12'7 (4.96m x 3.84m)  
Annexe Shower Area

### OUTSIDE

Front and Rear Garden  
Garage : 37'5 x 22'6 (11.41m x 6.86m)  
Garage Toilet  
Driveway



## Main features

- Beautifully presented with character features throughout
- Triple size garage with 1 bedroom flat above
- 2.06 acres with a separate entrance to the field
- Incredible view across the Greensand Ridge
- Short distance from the train station and motorway with direct links to London



### Nearest Schools

Primary Schools: Kingswood Primary 0.6 miles, Ulcombe C of E Primary 0.7 miles, Sutton Valence Primary 1.6 miles

Secondary Schools: Sutton Valence School 1.5 miles, Swadelands School 3.9 miles, Five Acre Wood School 4.7



### Transport Information

Train Stations: Harrietsham 2.6 miles, Hollingbourne 3.0 miles, Headcorn 3.4 miles



### Address

Morry Lane, East Sutton, Maidstone, Kent, ME17



### Directions

For directions to this property please contact us.





Call Headcorn Branch 01622 890435 ■ [wardsofkent.co.uk](https://wardsofkent.co.uk)



■ Legal advice should be taken to verify fixtures/fittings, planning, alterations and/or lease details ■ Appliances & services are untested, dimensions are approximate and floor plans are not to scale



12721631/20230703/HC/TB