



Price
£170,000

2x  2x  1x 

**Lime Grove, Woodlands
Park, Biddenden,
Ashford, Kent, TN27**

Wards
Helping you move forwards



Main features

- Beautifully presented park home
- Offered in excellent condition
- With en-suite shower room and walk-in-wardrobe
- Recently updated kitchen with integrated appliances
- Over 55s development

Accommodation

GROUND FLOOR

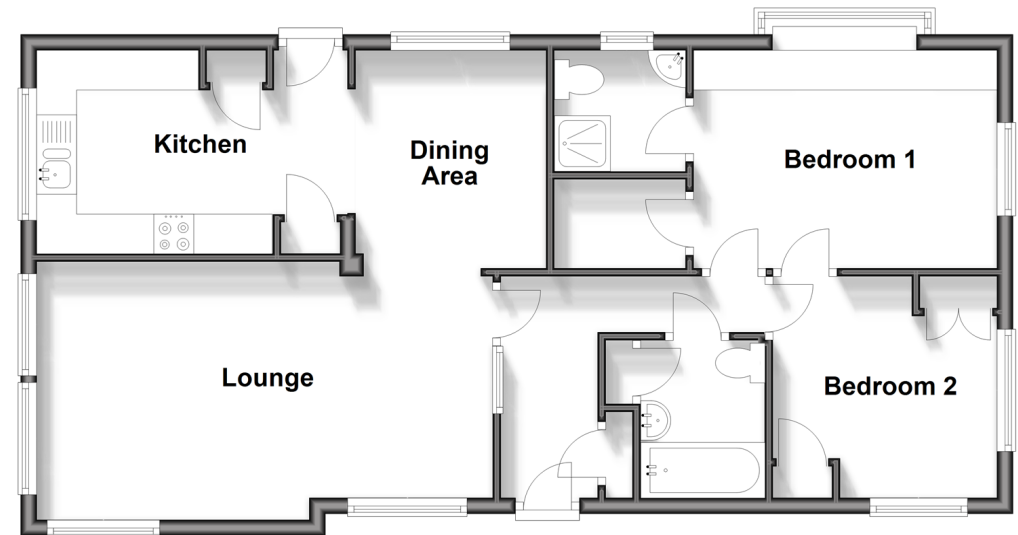
Entrance Hall
 Lounge: 18'9 x 10'7 (5.72m x 3.23m)
 Dining Area: 9'2 x 7'7 (2.80m x 2.31m)
 Kitchen: 12'9 x 8'4 (3.89m x 2.54m)
 Hallway
 Bedroom 1: 12'5 x 9'3 (3.79m x 2.82m)
 Walk-in Wardrobe
 En-suite Shower Room
 Bedroom 2: 9'4 x 9'2 (2.85m x 2.80m)
 Bathroom

OUTSIDE

Front and Rear Gardens
 Driveway

Ground Floor

Approx. 69.0 sq. metres (742.7 sq. feet)



Call Headcorn - 01622 890435 ■ wardsofKent.co.uk

■ If buying to let, the energy rating will need to be improved to at least 'E' rating before you can let the property

■ Appliances & services are untested, dimensions are approximate and floor plans are not to scale

■ Legal advice should be taken to verify fixtures/fittings, planning, alterations and/or lease details



12721633/20240423/JW/HS1