



**Price**  
**£165,000**

2x  2x  1x 

**Woodlands Lodge Park,  
Ashford, Kent, TN27**

*Wards*  
Helping you move forwards





## Main features

- Immaculately presented with neutral decor throughout
- Large driveway for 2 cars
- Stunning views across protected land
- Set on a beautiful site with a local shop
- Transport links in to both Headcorn and Maidstone

## Accommodation

### GROUND FLOOR

Entrance Hall

Lounge/Dining Area: 21'0 x 15'6  
(6.41m x 4.73m)

Hallway

Bedroom 1: 12'0 x 10'0 (3.66m x 3.05m)

En-suite Shower Room

Bedroom 2: 11'3 x 7'7 (3.43m x 2.31m)

Bathroom

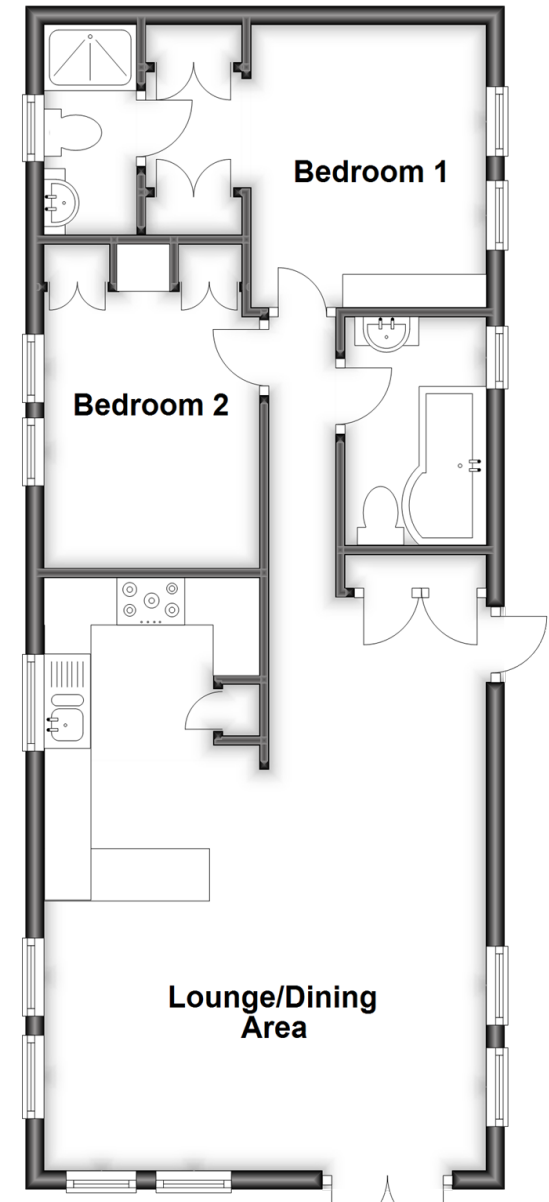
### OUTSIDE

Driveway 2 Cars

Rear Garden

## Ground Floor

Approx. 58.0 sq. metres (624.1 sq. feet)



**Call Headcorn - 01622 890435 ■ [wardsofken.co.uk](http://wardsofken.co.uk)**

- If buying to let, the energy rating will need to be improved to at least 'E' rating before you can let the property
- Legal advice should be taken to verify fixtures/fittings, planning, alterations and/or lease details
- Appliances & services are untested, dimensions are approximate and floor plans are not to scale



12721686/20230824/TB/TB