



Price
£625,000

Freehold

4x  2x  2x 

**South Lane, Sutton
Valence, Maidstone,
Kent, ME17**

OVER 60?

Secure this property
for up to **59% less!**

Wards
Helping you move forwards



Main features

- Immaculately presented with neutral decor throughout
- Stunning kitchen/diner
- Large drive with ample parking
- Beautiful rear garden with room to entertain and/or further extend
- Set in a quiet rural location just a short drive from schools and amenities

Accommodation

GROUND FLOOR

Entrance Hall

Shower Room: 8'6 x 6'5 (2.59m x 1.96m)

Lounge: 15'1 x 14'9 (4.60m x 4.50m)

Kitchen/Dining Area: 23'3 x 8'9 (7.09m x 2.67m)

Family Area: 13'6 x 12'8 (4.12m x 3.86m)

Utility Room: 8'7 x 6'7 (2.62m x 2.01m)

FIRST FLOOR

Landing

Bedroom 1: 14'4 x 11'8 (4.37m x 3.56m)

Bedroom 2: 12'2 x 8'2 (3.71m x 2.49m)

Bedroom 3: 9'9 x 7'8 (2.97m x 2.34m)

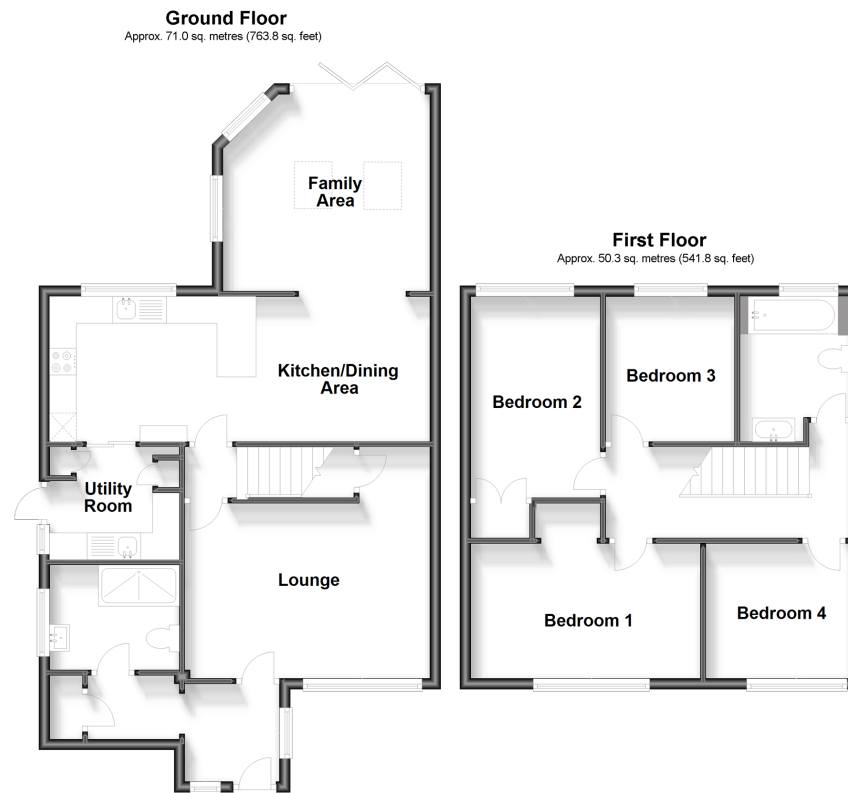
Bedroom 4: 8'8 x 8'3 (2.64m x 2.52m)

Bathroom

OUTSIDE

Front and Rear Gardens

Driveway and Garage



Call Headcorn - 01622 890435 ■ wardsofkent.co.uk

- Legal advice should be taken to verify fixtures/fittings, planning, alterations and/or lease details
- Appliances & services are untested, dimensions are approximate and floor plans are not to scale
- Through a Homewise Home For Life Plan people aged 60+ can secure this property for up to 59% less, by purchasing a Lifetime Lease.



12721694/20230804/HC/TB