



Price
£150,000

2x  2x  2x 

**Blossom Close,
Woodlands Park,
Biddenden, Ashford,
Kent, TN27**

Wards
Helping you move forwards



Main features

- Convenient driveway providing hassle free parking
- Modern kitchen with contemporary fittings and ample storage
- En-suite to main bedroom for added convenience
- Excellent location within easy access to local amenities, shops and transport links
- Exclusive over 55s development, fostering a friendly and secure community

Accommodation

GROUND FLOOR

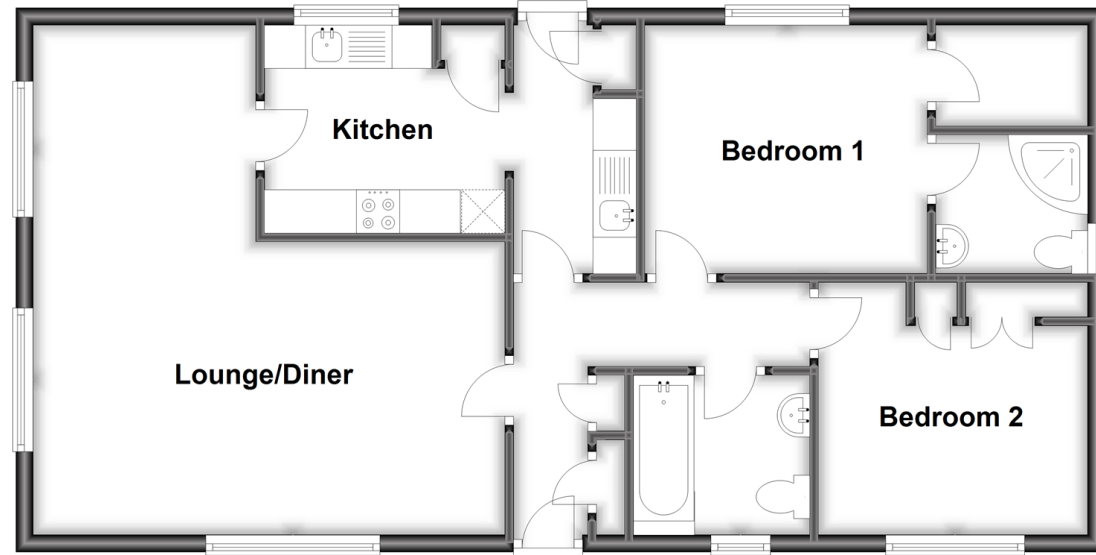
Entrance Hall
 Lounge/Diner: 19'4 x 17'9 (5.90m x 5.41m)
 Kitchen: 9'2 x 7'1 (2.80m x 2.16m)
 Utility: 9'6 x 4'11 (2.90m x 1.50m)
 Hallway
 Bathroom
 Bedroom 1: 10'6 x 9'2 (3.20m x 2.80m)
 En-suite Shower Room: 5'7 x 5'7 (1.70m x 1.70m)
 Bedroom 2: 10'2 x 9'6 (3.10m x 2.90m)

OUTSIDE

Driveway
 Front and Rear Garden

Ground Floor

Approx. 71.7 sq. metres (771.3 sq. feet)



Call Headcorn - 01622 890435 ■ wardsof Kent.co.uk

■ If buying to let, the energy rating will need to be improved to at least 'E' rating before you can let the property

■ Appliances & services are untested, dimensions are approximate and floor plans are not to scale

■ Legal advice should be taken to verify fixtures/fittings, planning, alterations and/or lease details



12721699/20230920/TB/TB