



OVER 60?

Secure this property
for up to **59% less!**

Price
£360,000

Freehold

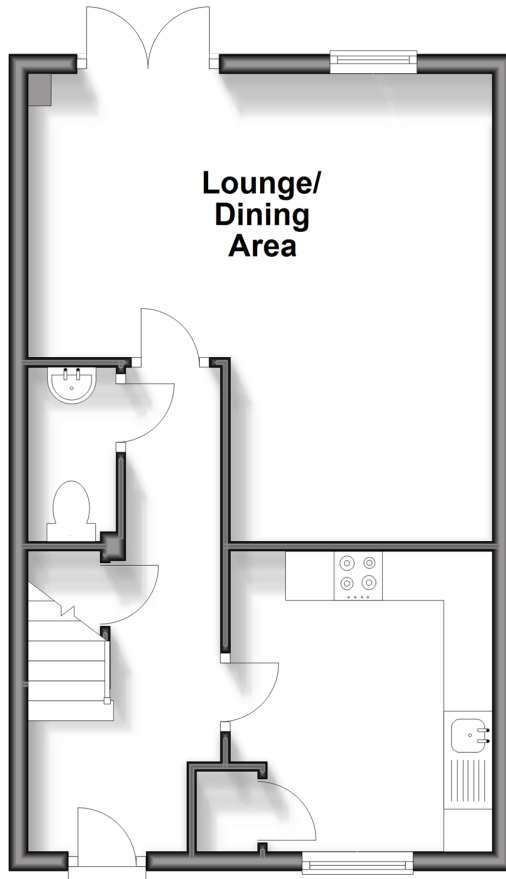
3x  2x  1x 

**Locks Yard, Headcorn,
Kent, TN27**

Wards
Helping you move forwards

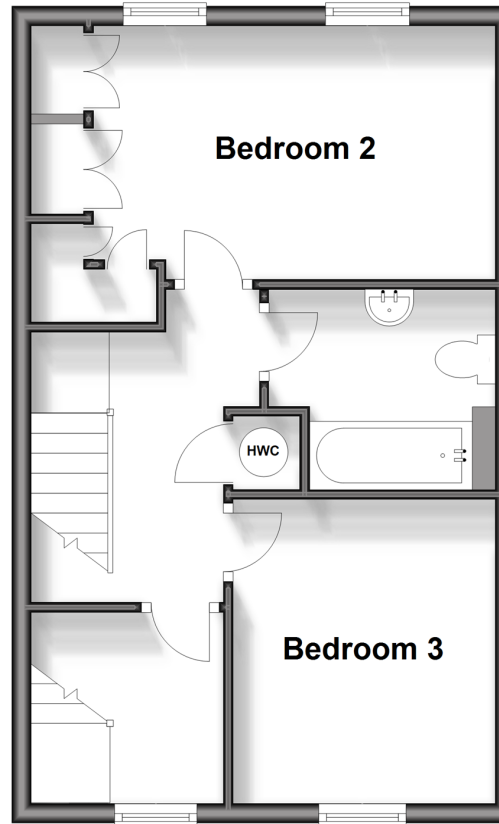
Ground Floor

Approx. 38.0 sq. metres (409.2 sq. feet)



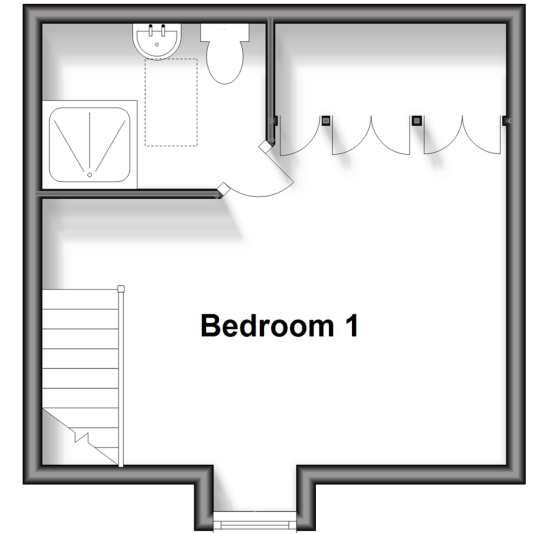
First Floor

Approx. 38.0 sq. metres (409.2 sq. feet)



Second Floor

Approx. 22.0 sq. metres (236.7 sq. feet)



Accommodation

GROUND FLOOR

Entrance Hall

Cloakroom

Kitchen: 9'9 x 8'10 (2.97m x 2.69m)

Lounge/Dining Area: 23'8 x 14'3 (7.22m x 4.35m)

FIRST FLOOR

Landing

Bedroom 2: 13'8 x 8'6 (4.17m x 2.59m)

Bedroom 3: 10'2 x 8'10 (3.10m x 2.69m)

Bathroom

SECOND FLOOR

Bedroom 1: 15'8 x 11'4 (4.78m x 3.46m)

En-suite Shower Room

OUTSIDE

Rear Garden

2 Allocated Parking Spaces



Main features

- Neatly presented mid-terrace house
- Located in a quiet cul-de-sac just a short walk from Headcorn High Street
- Set out over 3 floors
- Landscaped, low maintenance rear garden perfect for entertaining
- Benefiting from 2 allocated parking spaces



Nearest Schools

Primary Schools: Headcorn Primary School 0.7 miles, Smarden Primary 4.2 miles, Ulcombe C of E Primary 4.3 miles

Secondary Schools: Heath Farm School 3.1 miles,



Transport Information

Train Stations: Headcorn 0.4 miles, Pluckley 3.6 miles, Lenham 5.6 miles



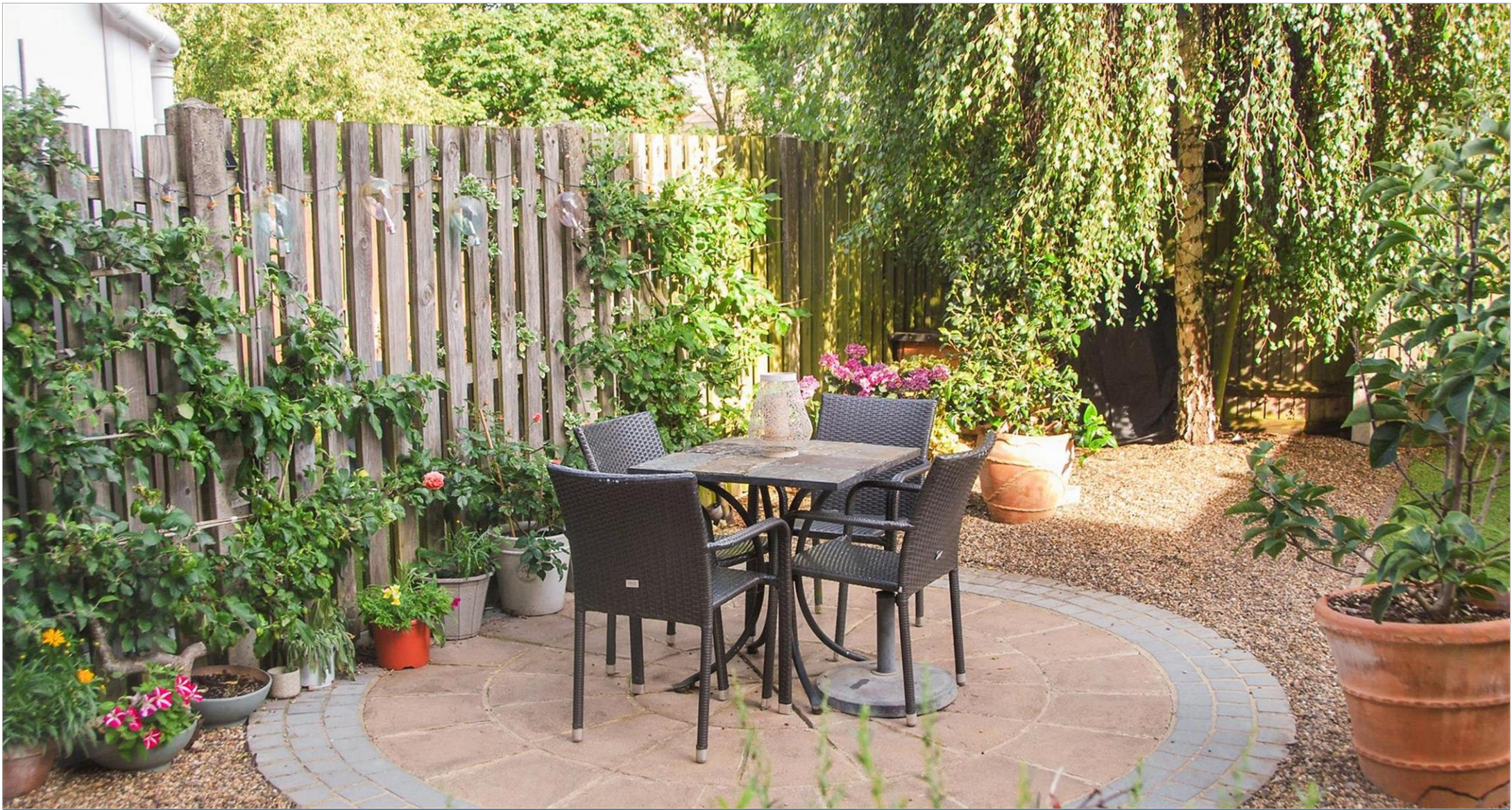
Address

Locks Yard, Headcorn, Kent, TN27



Directions

For directions to this property please contact us.



Wards
Helping you move forwards

Call Headcorn Branch 01622 890435 ■ wardsofkent.co.uk



■ Legal advice should be taken to verify fixtures/fittings, planning, alterations and/or lease details ■ Appliances & services are untested, dimensions are approximate and floor plans are not to scale
■ Through a Homewise Home For Life Plan people aged 60+ can secure this property for up to 59% less, by purchasing a Lifetime Lease.



12721748/20240217/DB/HS1