



Guide Price
£365,000

Freehold

3x  1x  1x 

**Spinners Close,
Biddenden, Ashford,
Kent, TN27**

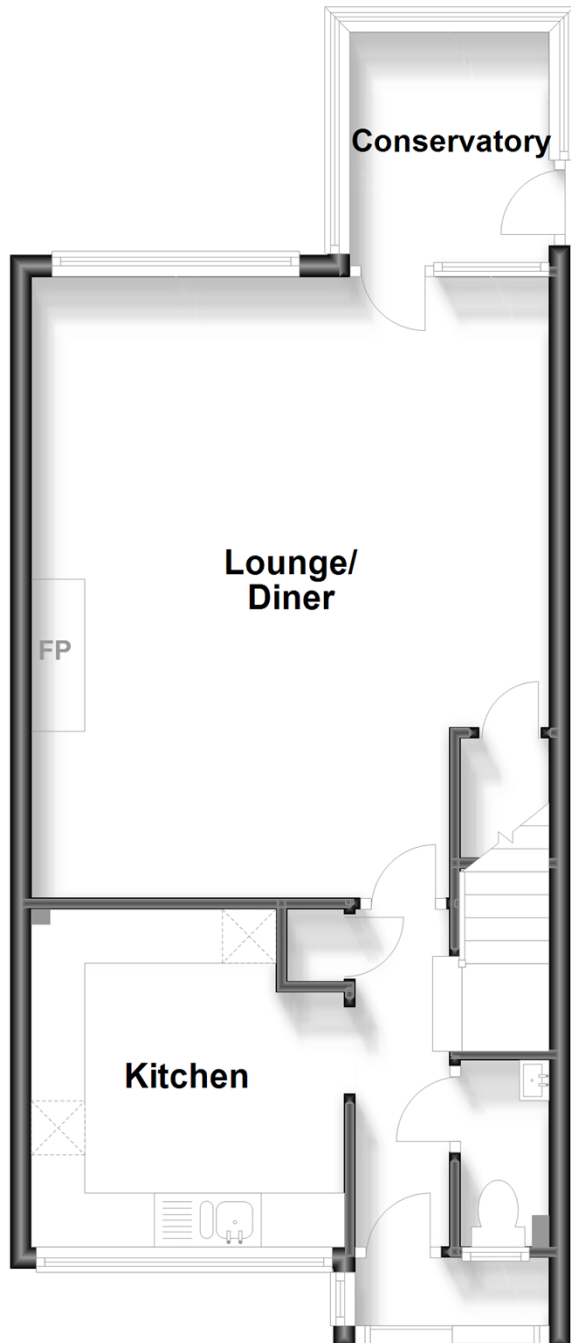
OVER 60?

Secure this property
for up to **59% less!**

Wards
Helping you move forwards

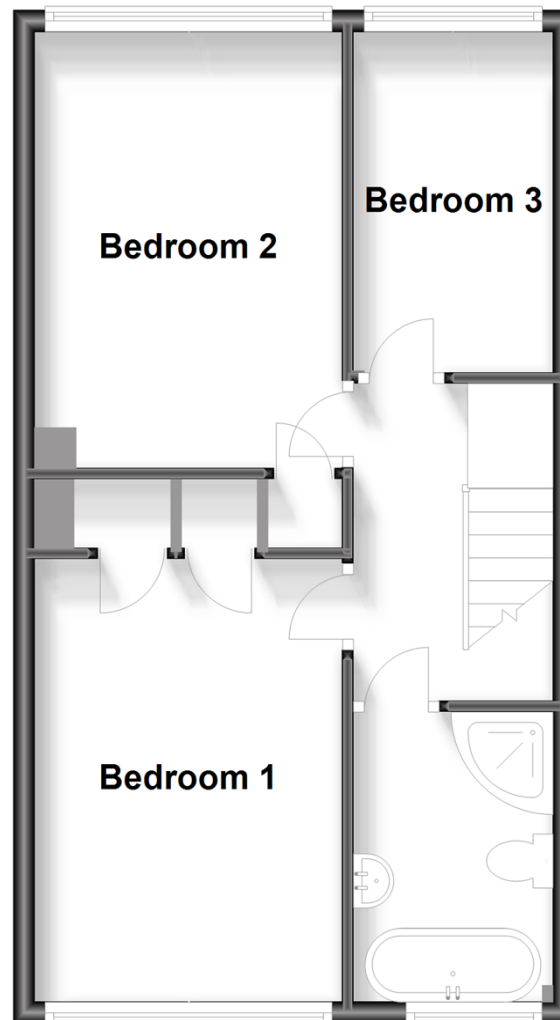
Ground Floor

Approx. 528.1 sq. feet



First Floor

Approx. 468.5 sq. feet



Accommodation

GROUND FLOOR

Entrance Hall

Lounge/Diner: 18'9 x 15'9 (5.72m x 4.80m)

Kitchen: 10'1 x 9'5 (3.08m x 2.87m)

Cloakroom

Conservatory: 7'2 x 6'2 (2.19m x 1.88m)

FIRST FLOOR

Landing

Bedroom 1: 16'0 x 9'4 (4.88m x 2.85m)

Bedroom 2: 13'3 x 9'5 (4.04m x 2.87m)

Bedroom 3: 10'3 x 6'1 (3.13m x 1.86m)

Bathroom

OUTSIDE

Front Garden

Large Rear Garden

Garage

Driveway



Main features

- Beautifully presented with neutral decor
- Garage en-bloc
- Scope to extend subject to planning permission
- Stunning large corner plot garden, perfect for entertaining
- Quiet cul-de-sac location nearby to tranquil country walks
- Close to local schools
- Electric charging point



Nearest Schools

Primary Schools: John Mayne C of E Primary, Biddenden 0.4 miles, Smarden Primary 3.7 miles, St Michael's C of E Primary (Tenterden) 3.9 miles
Secondary Schools: Homewood School and Sixth Form Centre 4.7 miles, Benenden School 5.0 miles, Cranbrook



Transport Information

Train Stations: Headcorn 4.1 miles, Pluckley 8.6 miles, Staplehurst 8.8 miles



Address

Spinners Close, Biddenden, Ashford, Kent, TN27



Directions

For directions to this property please contact us.



Call Headcorn Branch 01622 890435 ■ wardsofkent.co.uk



- Legal advice should be taken to verify fixtures/fittings, planning, alterations and/or lease details
- Appliances & services are untested, dimensions are approximate and floor plans are not to scale
- Through a Homewise Home For Life Plan people aged 60+ can secure this property for up to 59% less, by purchasing a Lifetime Lease.



12721762/20231019/HC/TB