



Price
£700,000

Freehold

4x  2x  2x 

**Old Ashford Road,
Lenham, Maidstone,
Kent, ME17**

OVER 60?

Secure this property
for up to **59% less!**

Wards
Helping you move forwards



Main features

- Double garage and large driveway
- Separate study
- Within walking distance to Lenham square and train station
- Immaculately presented and spacious throughout
- 9 year warranty provided by National house building council

Accommodation

GROUND FLOOR

Entrance Hall

Lounge: 19'2 x 16'4 (5.85m x 4.98m)

Kitchen/Diner: 22'8 x 12'3 (6.91m x 3.74m)

Study: 11'9 x 8'8 (3.58m x 2.64m)

Utility/Cloakroom: 12'0 x 5'6 (3.66m x 1.68m)

FIRST FLOOR

Landing

Bedroom 1: 19'1 x 12'2 (5.82m x 3.71m)

En-suite Shower Room

Bedroom 2: 12'5 x 11'6 (3.79m x 3.51m)

Bedroom 3: 12'5 x 10'6 (3.79m x 3.20m)

Bedroom 4: 12'6 x 11'7 (3.81m x 3.53m)

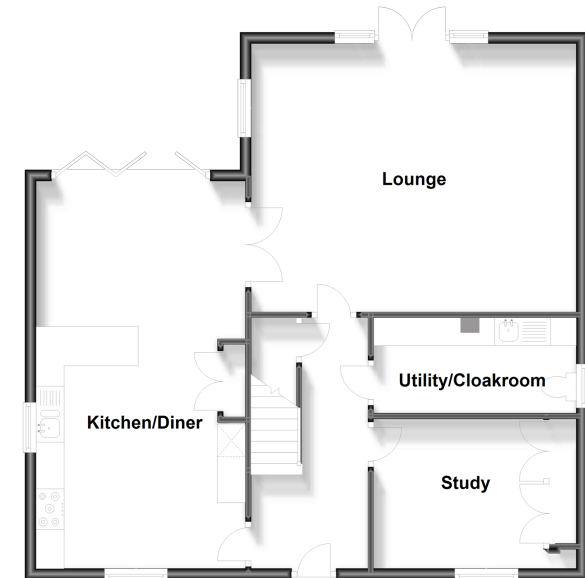
Bathroom

OUTSIDE

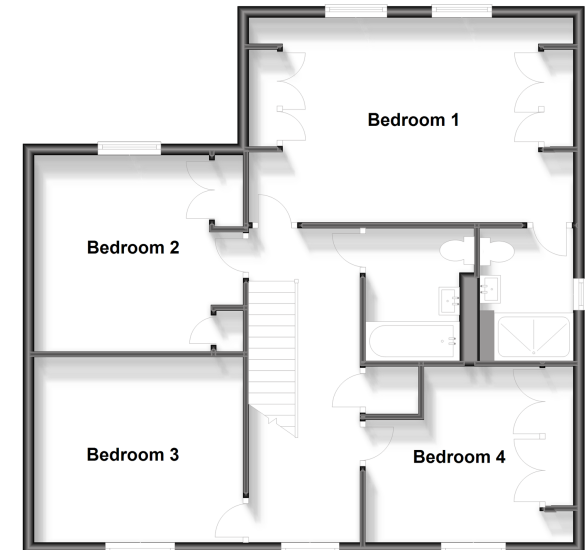
Front and Rear Gardens

Driveway and Garage

Ground Floor
Approx. 81.5 sq. metres (877.1 sq. feet)



First Floor
Approx. 82.7 sq. metres (889.8 sq. feet)



Call Headcorn - 01622 890435 ■ wardsofkennt.co.uk

- Legal advice should be taken to verify fixtures/fittings, planning, alterations and/or lease details
- Appliances & services are untested, dimensions are approximate and floor plans are not to scale
- Through a Homewise Home For Life Plan people aged 60+ can secure this property for up to 59% less, by purchasing a Lifetime Lease.



12721763/20231017/DB/TB