



Price
£240,000

Freehold

2x  1x  1x 

**Hadman Cottages,
Weald North, Smarden,
Ashford, Kent, TN27**

OVER 60?

Secure this property
for up to **59% less!**

Wards
Helping you move forwards



Main features

- Chain free
- Stunning countryside views
- Set in a quiet rural location
- Driveway and garage
- A fantastic corner plot cottage with room to extend subject to planning

Accommodation

GROUND FLOOR

Entrance Hall

Lounge: 13'0 x 11'3 (3.97m x 3.43m)

Kitchen: 13'4 x 8'5 (4.07m x 2.57m)

FIRST FLOOR

Landing

Bedroom 1: 11'5 x 10'2 (3.48m x 3.10m)

Bedroom 2: 10'8 x 8'3 (3.25m x 2.52m)

Shower Room

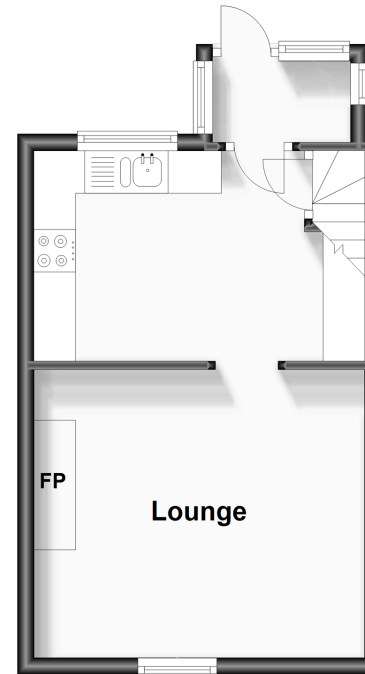
OUTSIDE

Front and Rear Gardens

Garage and Driveway

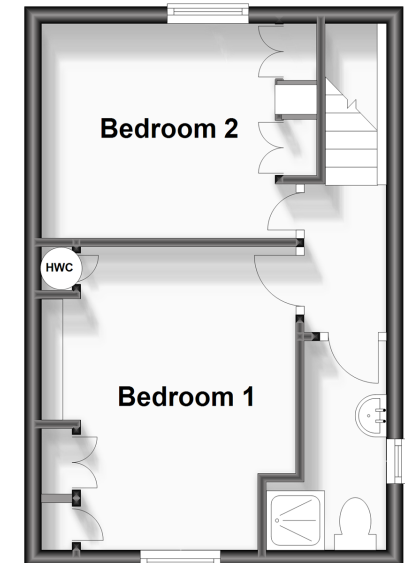
Ground Floor

Approx. 25.5 sq. metres (274.4 sq. feet)



First Floor

Approx. 25.7 sq. metres (277.0 sq. feet)



Call Headcorn - 01622 890435 ■ wardsof Kent.co.uk

- If buying to let, the energy rating will need to be improved to at least 'E' rating before you can let the property
- Appliances & services are untested, dimensions are approximate and floor plans are not to scale

- Legal advice should be taken to verify fixtures/fittings, planning, alterations and/or lease details
- Through a Homewise Home For Life Plan people aged 60+ can secure this property for up to 59% less, by purchasing a Lifetime Lease.

