



**Price**  
**£550,000**

**Freehold**

3x  1x  3x 

**Sandway Road,  
Sandway, Maidstone,  
Kent, ME17**

*Wards*  
Helping you move forwards





## Main features

- Immaculately presented with neutral decor throughout
- Large driveway to the rear
- Stunning garden with room to entertain
- Spacious home office with water, electricity and gas
- Nearby to local school, shops and main line train station

## Accommodation

### GROUND FLOOR

Entrance Hall

Lounge: 19'2 x 10'5 (5.85m x 3.18m)

Dining Room: 10'4 x 9'9 (3.15m x 2.97m)

Kitchen: 12'6 x 7'6 (3.81m x 2.29m)

### FIRST FLOOR

Landing

Bedroom 1: 12'4 x 10'9 (3.76m x 3.28m)

Bedroom 2: 11'1 x 9'6 (3.38m x 2.90m)

Bedroom 3: 11'8 x 8'5 (3.56m x 2.57m)

Bathroom

### OUTSIDE

Front and Rear Gardens

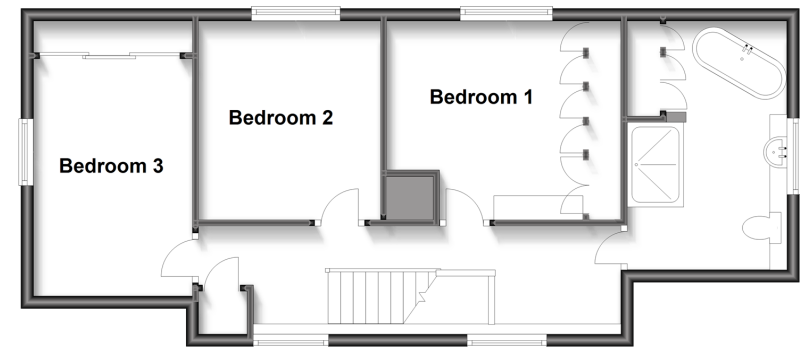
Driveway

Garage: 19'4 x 10'1 (5.90m x 3.08m)

Office: 19'5 x 11'7 (5.92m x 3.53m)

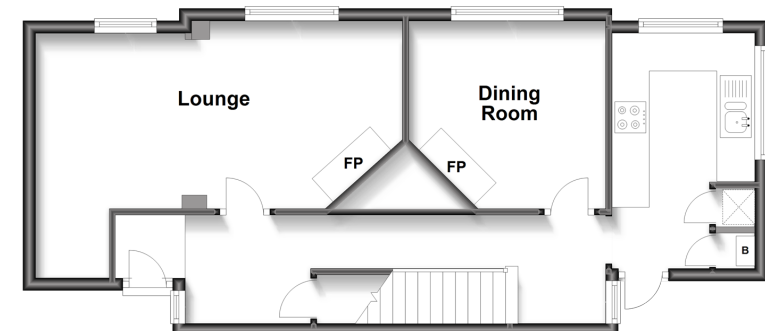
### First Floor

Approx. 56.7 sq. metres (610.0 sq. feet)



### Split Level Ground Floor

Approx. 51.5 sq. metres (554.1 sq. feet)



Call Headcorn - 01622 890435 ■ [wardsof Kent.co.uk](http://wardsof Kent.co.uk)

■ Legal advice should be taken to verify fixtures/fittings, planning, alterations and/or lease details

■ Appliances & services are untested, dimensions are approximate and floor plans are not to scale



12721770/20231123/HC/TB