



Price
£500,000

Freehold

4x  2x  2x 

**Tolhurst Way, Lenham,
Maidstone, Kent, ME17**

OVER 60?

Secure this property
for up to **59% less!**

Wards
Helping you move forwards



Main features

- Immaculately presented throughout
- Spacious throughout with room to entertain
- En-suite to main bedroom
- Beautiful sunny garden with purpose built games room
- Set on a private road within walking distance to the square

Accommodation

GROUND FLOOR

Entrance Hall

Lounge : 16'8 x 10'5 (5.08m x 3.18m)

Kitchen/Diner: 18'6 x 11'7 (5.64m x 3.53m)

Cloakroom

FIRST FLOOR

Landing

Bedroom 1: 13'7 x 11'2 (4.14m x 3.41m)

En-suite Shower Room

Bedroom 2: 11'4 x 10'7 (3.46m x 3.23m)

Bedroom 3: 15'5 x 9'9 (4.70m x 2.97m)

Bedroom 4: 11'4 x 7'9 (3.46m x 2.36m)

Bathroom

OUTSIDE

Games Area: 17'3 x 12'5 (5.26m x 3.79m)

Rear Garden

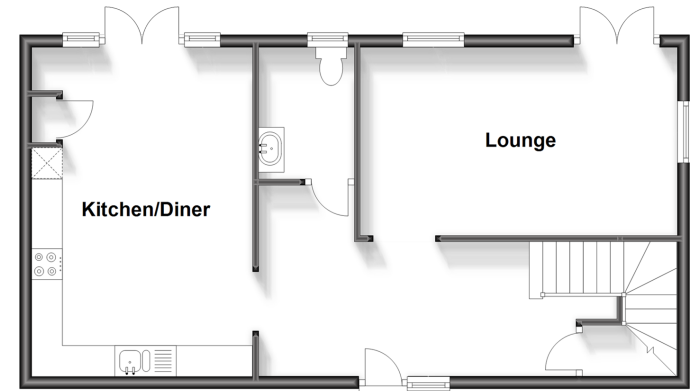
Allocated Parking

Call Headcorn - 01622 890435 ■ wardsofken.co.uk

- Legal advice should be taken to verify fixtures/fittings, planning, alterations and/or lease details
- Appliances & services are untested, dimensions are approximate and floor plans are not to scale
- Through a Homewise Home For Life Plan people aged 60+ can secure this property for up to 59% less, by purchasing a Lifetime Lease.

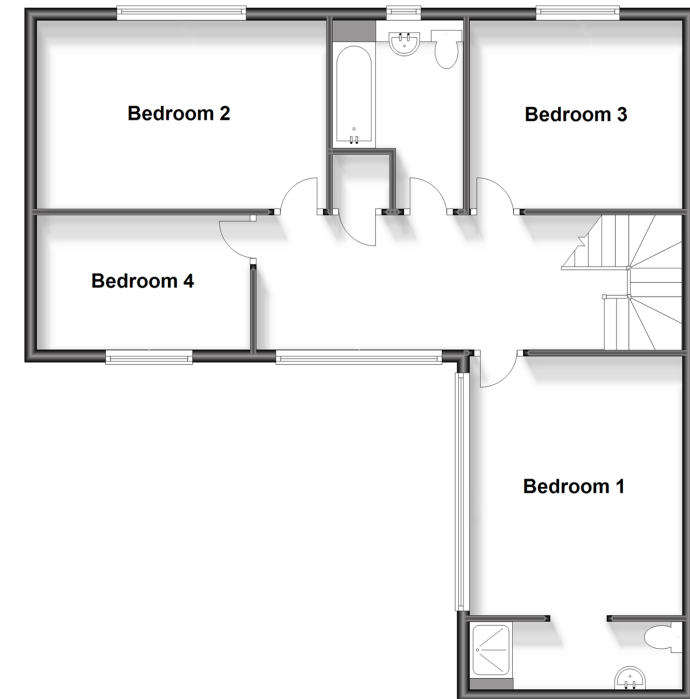
Ground Floor

Approx. 56.0 sq. metres (602.5 sq. feet)



First Floor

Approx. 75.0 sq. metres (806.9 sq. feet)



12721777/20231010/TB/TB